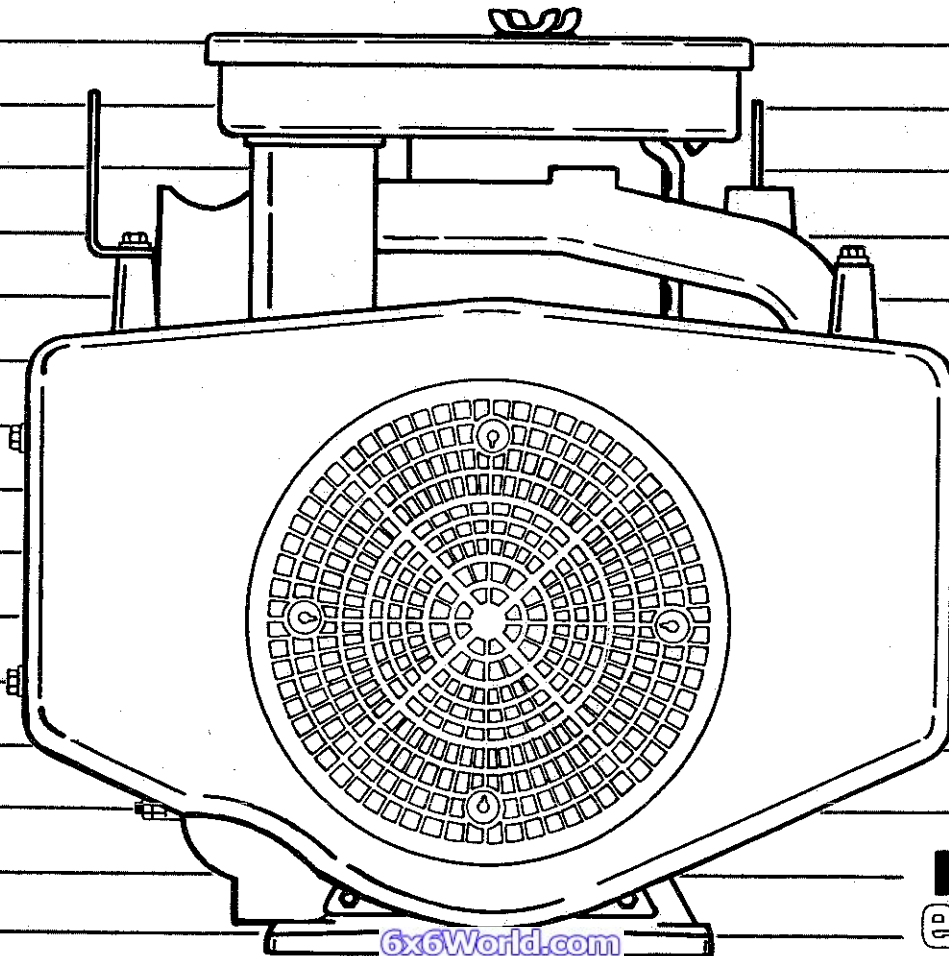


PARTS MANUAL

MAGNUM

MODEL	HP	ENGINE SPECS
M18	18	24500-24539
M20	20	49500-49525

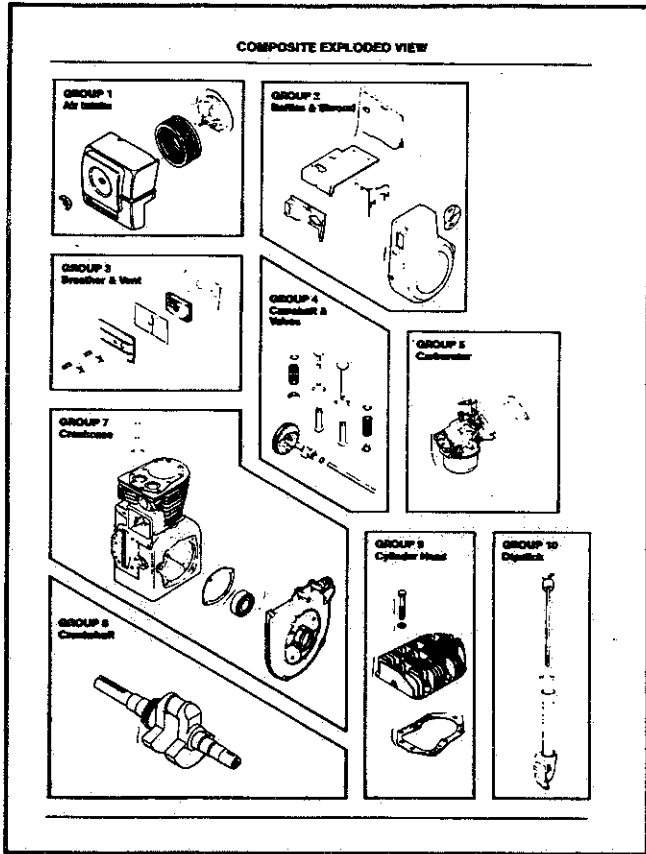


6x6World.com

KOHLER
engines

HOW TO FIND YOUR PART NUMBER

Group 39 GASKET SET



1. Turn the page of the parts manual to the "Composite Exploded View." Notice the boxed groupings identified by their function along with corresponding number. The group function and number applies to all engine models.

For Example:

Function (Group Description)	Group Number
Air Intake	1
Baffles & Shroud	2
Breather & Vent	3
Camshaft & Valves	4
Carburetor.....	5
Electric Starter	11
Ignition.....	18

etc.

Remember the Group Number in which you located your part. (If the part you need is not illustrated, locate a major engine function related to your part and use that Group Number.)

SPECIFICATION NUMBER INDEX

Group Title & Number	1	2	3	4	5	7	8	9	10	11	12	13	14	15	16	17	18	19	20	22	23	24	25	26
Air Intake	1	2	3	4	5	7	8	9	10	11	12	13	14	15	16	17	18	19	20	22	23	24	25	26
Baffles & Shroud	1	2	3	4	5	7	8	9	10	11	12	13	14	15	16	17	18	19	20	22	23	24	25	26
Breather & Vent	1	2	3	4	5	7	8	9	10	11	12	13	14	15	16	17	18	19	20	22	23	24	25	26
Camshaft & Valves	1	2	3	4	5	7	8	9	10	11	12	13	14	15	16	17	18	19	20	22	23	24	25	26
Carburetor	1	2	3	4	5	7	8	9	10	11	12	13	14	15	16	17	18	19	20	22	23	24	25	26
Crankcase	1	2	3	4	5	7	8	9	10	11	12	13	14	15	16	17	18	19	20	22	23	24	25	26
Crankshaft	1	2	3	4	5	7	8	9	10	11	12	13	14	15	16	17	18	19	20	22	23	24	25	26
Cylinder Head	1	2	3	4	5	7	8	9	10	11	12	13	14	15	16	17	18	19	20	22	23	24	25	26
Dipstick	1	2	3	4	5	7	8	9	10	11	12	13	14	15	16	17	18	19	20	22	23	24	25	26
Electric Start	1	2	3	4	5	7	8	9	10	11	12	13	14	15	16	17	18	19	20	22	23	24	25	26
Exhaust	1	2	3	4	5	7	8	9	10	11	12	13	14	15	16	17	18	19	20	22	23	24	25	26
Flywheel	1	2	3	4	5	7	8	9	10	11	12	13	14	15	16	17	18	19	20	22	23	24	25	26
Fuel Pump	1	2	3	4	5	7	8	9	10	11	12	13	14	15	16	17	18	19	20	22	23	24	25	26
Fuel Tank	1	2	3	4	5	7	8	9	10	11	12	13	14	15	16	17	18	19	20	22	23	24	25	26
Gear Reduction	1	2	3	4	5	7	8	9	10	11	12	13	14	15	16	17	18	19	20	22	23	24	25	26
Governor	1	2	3	4	5	7	8	9	10	11	12	13	14	15	16	17	18	19	20	22	23	24	25	26
Ignition	1	2	3	4	5	7	8	9	10	11	12	13	14	15	16	17	18	19	20	22	23	24	25	26
Instrument Panel	1	2	3	4	5	7	8	9	10	11	12	13	14	15	16	17	18	19	20	22	23	24	25	26
Oil Pan	1	2	3	4	5	7	8	9	10	11	12	13	14	15	16	17	18	19	20	22	23	24	25	26
Piston & Rod	1	2	3	4	5	7	8	9	10	11	12	13	14	15	16	17	18	19	20	22	23	24	25	26
Retrievable Start	1	2	3	4	5	7	8	9	10	11	12	13	14	15	16	17	18	19	20	22	23	24	25	26
Gasket Set	1	2	3	4	5	7	8	9	10	11	12	13	14	15	16	17	18	19	20	22	23	24	25	26

Spec. No.	Variation Number																		
461502	576	171	512	26	76	213	105	80	568	44	717	562	566	576	727	544	558	1	27
461501	576	171	512	26	76	213	105	80	568	44	715	562	566	576	727	544	558	1	27
461502	576	171	512	26	76	213	105	80	568	44	716	562	565	575	726	543	556	1	27
461503	576	171	512	26	76	213	105	80	568	44	744	562	566	575	726	543	558	1	27
461518	576	171	512	26	76	213	105	80	568	44	766	562	566	576	726	544	558	1	27
461524	576	171	512	26	76	213	105	80	568	44	716	562	568	576	726	553	558	1	27

Contact your Kohler engine parts supplier for any specifications not listed.

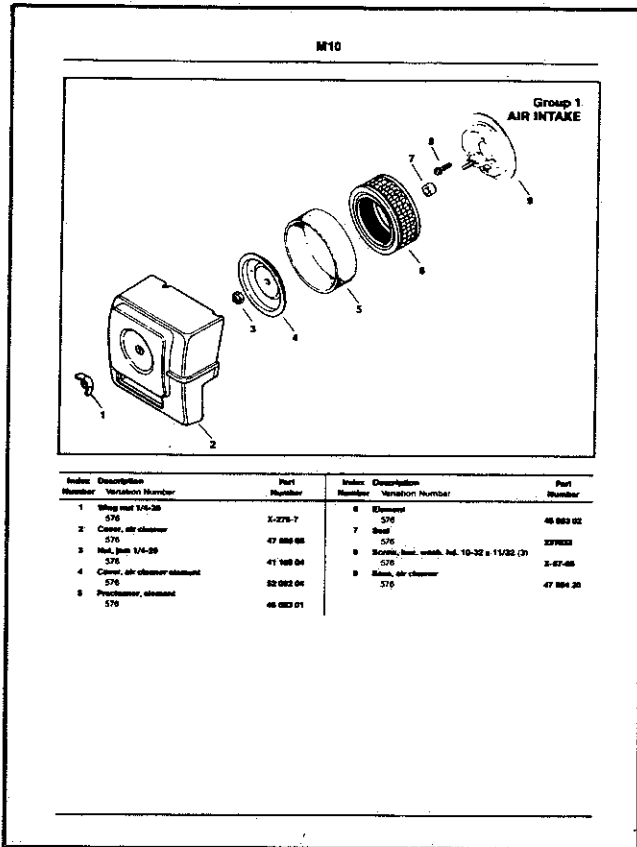
For MiniBlocks, Short Blocks, and Replacement Engines refer to Selection Guide TP-22-9.

See Page 26 for Decal information.

2. Now turn to the pages titled "Specification Number Index." When scanning these pages, you'll notice:

- A. Page Numbers indexing where Group Parts are listed;
- B. Specification Numbers listed vertically down the first column;
- C. "Variation" Numbers in the Group Number columns. (These numbers specifically identify a particular group (combination) of parts used in a particular model(s)—and is used to locate the specific part number.)

HOW TO FIND YOUR PART NUMBER



3. Look at the illustration and the listing of the parts making up that group.

A. All parts in the illustration are identified (or indexed) with a number or letter. Use that identifier to locate that part description in the listing.

B. The "Variation" Number that you located in the Spec Index page is the number you should locate in the parts listing. It is a critical reference to correct part number identification.

C. Part Numbers are listed in the column to the right of Variation Numbers.

M10

There are several methods of repowering M10 engines to consider—with the choice depending on your shop facilities, repair costs, and allowable downtime of the engine.

- Engine Replacement:** When decision is to replace, use a Kohler Replacement Engine—no modifications required.
- Short Block Replacement:** When engine including the crankshaft is extensively damaged or worn internally. Refer to page 3 for short block components.
- Miniblock Replacement:** When bore, piston, and connecting rod are damaged but crankshaft and all other parts are in good condition. Refer to page 3 for miniblock components.
- Complete Overhaul:** Rebore cylinders and reground crankshaft, using appropriate oversize and/or undersize replacement parts.

This Selection Guide provides an easy reference for determining the part number of the Replacement Engine, Short Block, or Miniblock required for the repower method selected. It also lists the part number of the crankshaft installed in the original engine.

Locate the engine specification number in the index below. Select the part number of the repair method listed in the adjacent columns.

ENGINE SPECIFICATIONS					
Engine Spec. No.	Supp. Service/ Replac. Engine	Original Engine Crankshaft No.	Replac. ShortBlock	Replac. Miniblock	
461500*	461500*	47 142 02	—	47 782 32	
461501*	461501*	47 142 02	—	47 782 32	
461502*	461502*	47 142 02	—	47 782 32	
461503*	461503*	47 142 02	—	47 782 32	
461518	—	47 142 02	—	47 782 32	
461528	—	47 142 02	—	47 782 32	

*Basic Engine

Special Features

Near the end of the Parts Manual Binder is a separate section devoted to Service Engines, Short Blocks, and Miniblocks. "Selection Guides" for each model engine give several different methods of repairing Kohler engines . . . with the choice dependent on shop facilities, costs, and allowable downtime of the engine and/or the equipment.

Selection Guides are easy references for determining part numbers of Replacement Engines, Short Blocks, or Miniblocks for the repair method selected. They also list part numbers of crankshafts installed in original engines.

Here is what you'll find:

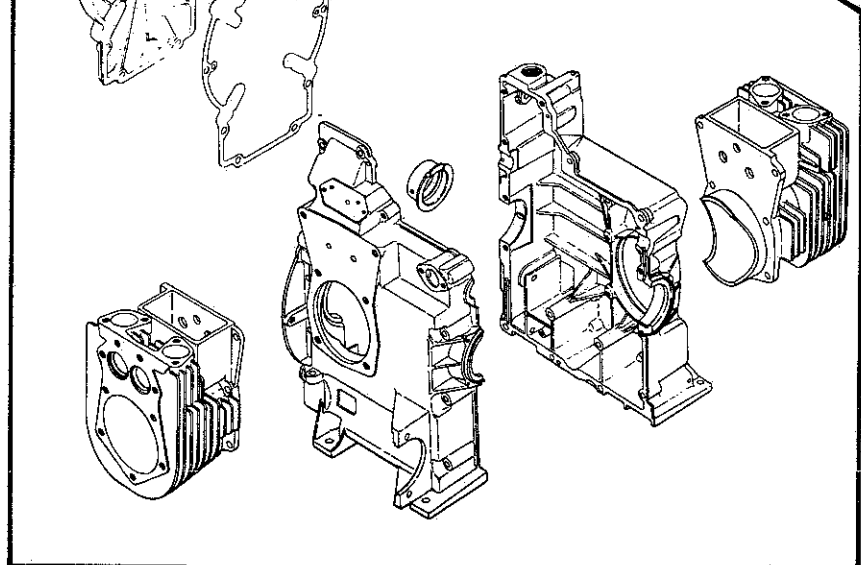
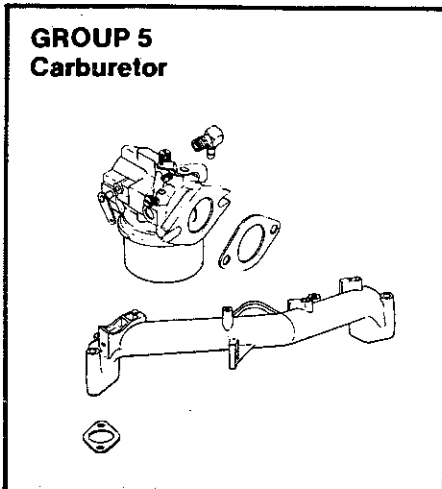
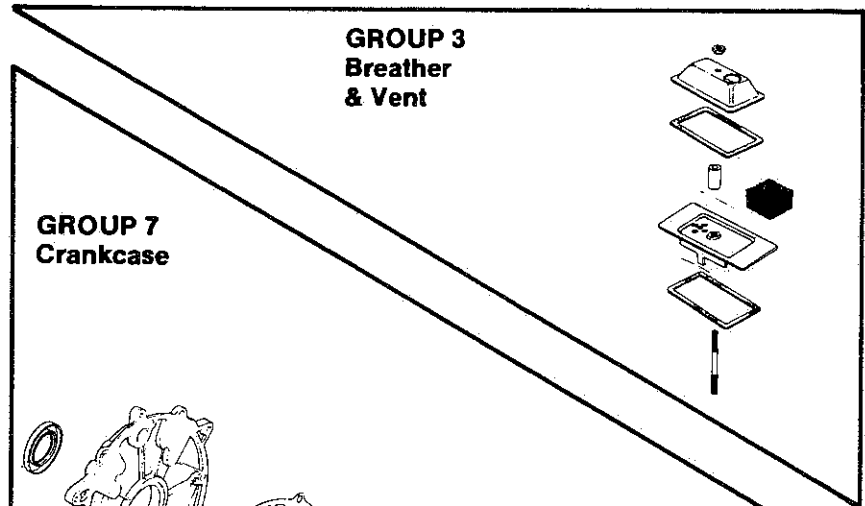
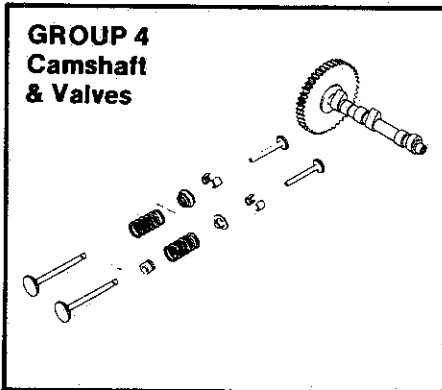
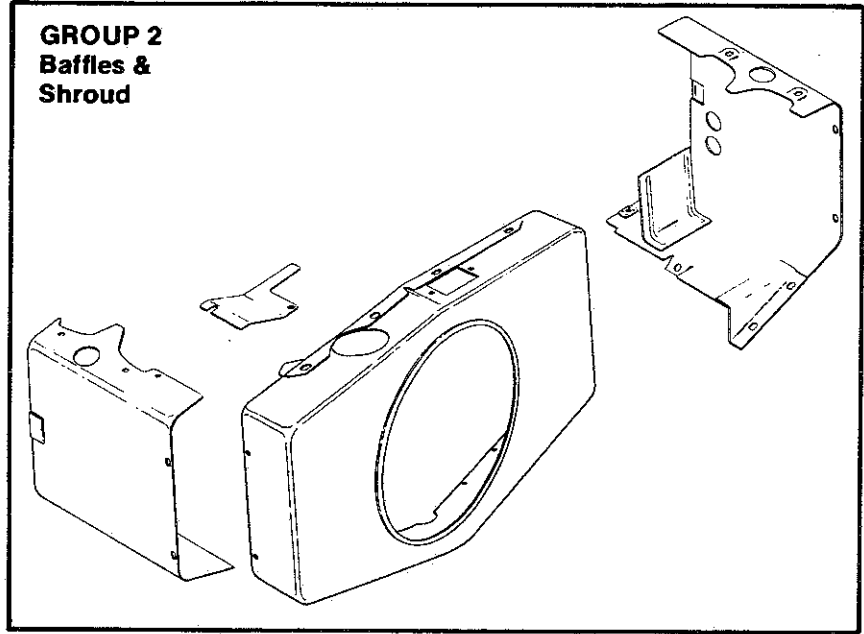
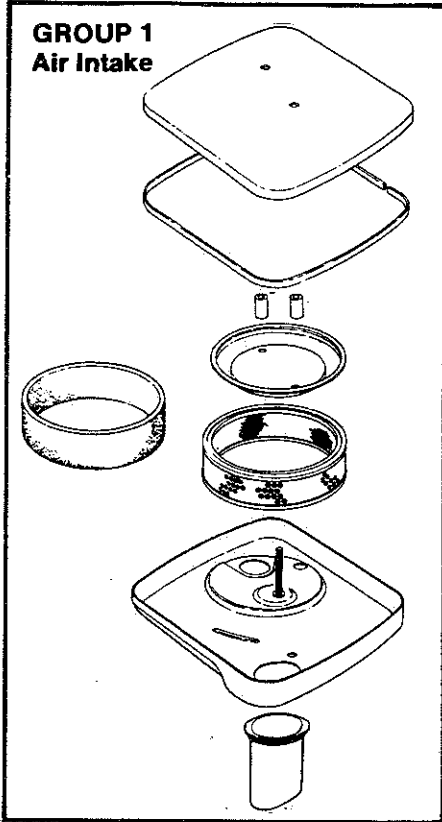
A. Engine model is identified on each page for easy reference;

B. Bold column heads identify the various repower options for every engine spec;

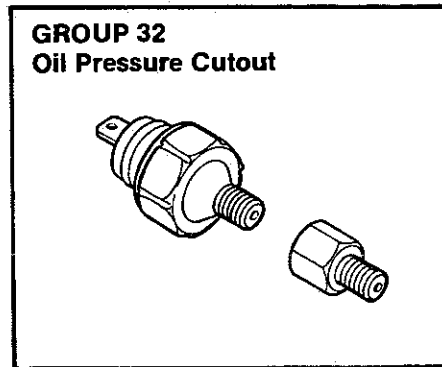
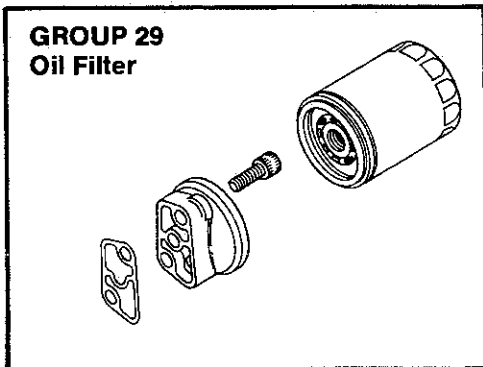
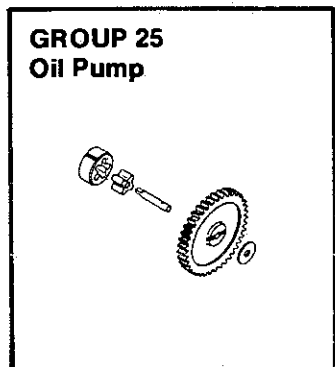
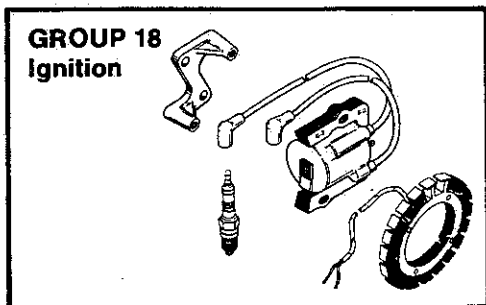
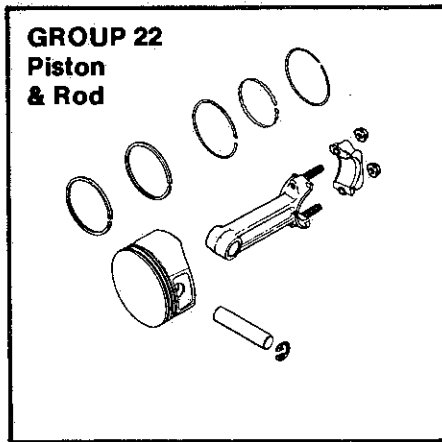
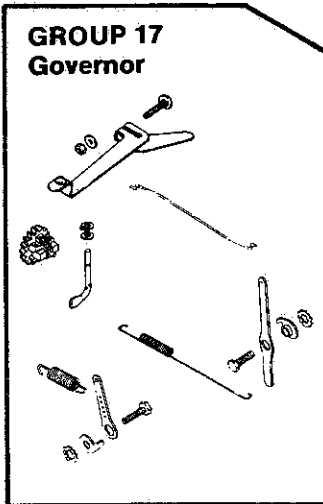
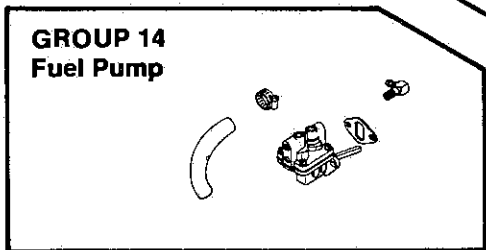
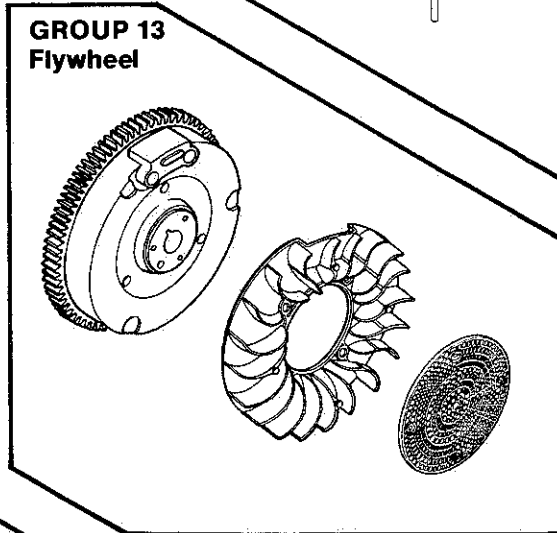
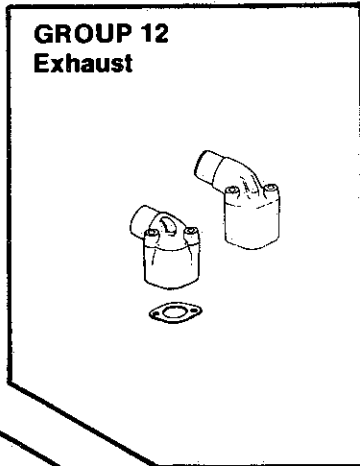
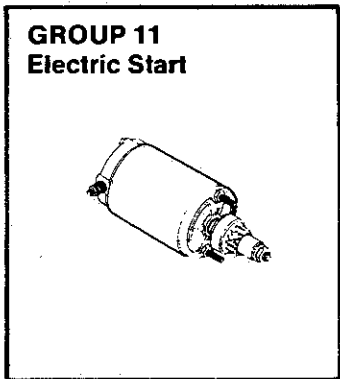
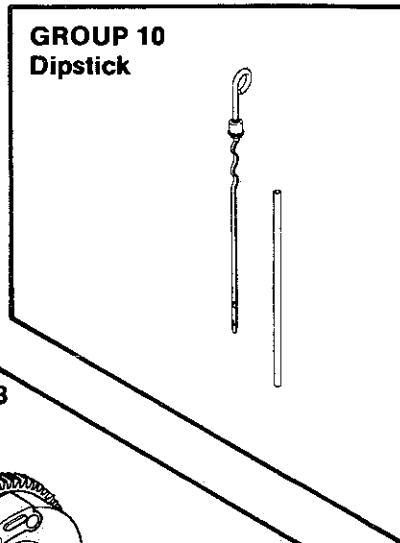
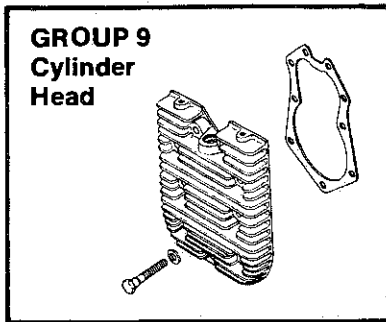
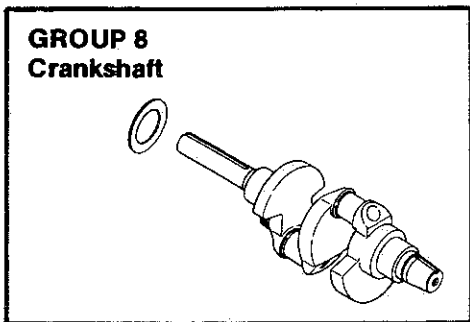
C. All crankshaft changes required for Service Engines or Replacement Engines are flagged with "Yes,"

D. Service Engines, Replacement Engines, Short Blocks, and Miniblocks.

COMPOSITE EXPLODED VIEW



COMPOSITE EXPLODED VIEW



SPECIFICATION NUMBER INDEX

Group Title & Number	Air Intake	Baffles & Shroud	Breather & Vent	Camshaft & Valves	Carburetor	Crankcase	Crankshaft	Cylinder Head	Dipstick	Electric Start	Exhaust	Flywheel	Fuel Pump	Governor	Ignition	Instrument Panel	Piston & Rod	Oil Pump	Oil Filter	Oil Pressure Cutout	Gasket Set
	1	2	3	4	5	7	8	9	10	11	12	13	14	17	18	19	22	25	29	32	39
Page	8	10	12	13	14	16	18	19	20	21	22	23	24	25	26	28	30	31	32	33	34

Spec. No.

Variation Number

MODEL M18

24500	14	77	4	17	13	112	80	11	13	9	19	56	5	6	29		14	4	2		53
24501	14	77	4	17	13	112	80	11	13	9	19	56	5	15	18	6	14	4	2		53
24502	14	77	4	17	13	121	99	11	13	9	19	56	5	13	29		14	4	2		53
24503	14	94	4	17	13	112	80	11	13	9	21	56	5	6	29		14	4	3		53
24506	13	100	3	17	12	114	84	11	14	9	8	57	5	8	16		14	4	7	6	53
24508	13	79	3	17	13	112	80	11	14	9	100	56	6	10	29		14	4	4		53
24509	29	81	3	17	13	117	80	11	13	9	7	58	5	6	31		14	4	4	8	53
24511	34	83	3	17	13	117	80	11	13	9	101	58	5	6	22		14	4	4	8	53
24512	30	84	3	17	13	117	84	11	14	9	20	200	5	6	31		14	4	4	8	53
24515	13	79	3	17	13	117	80	11	14	9	100	56	300	19	29		14	4	2		53
24519	14	98	4	17	13	114	83	11	13	9	7	58	7	6	23		14	4	4		53
24523	14	77	4	17	13	112	80	11	13	9	24	56	5	6	29		14	4	2		53
24524	14	94	4	17	13	112	88	11	13	9	7	66	5	6	27		14	4	4		53
24529	13	110	3	17	13	118	114	11	14	8	102	201	10	6	29		14	4	2		53
24532	14	94	4	17	13	112	85	11	13	9	21	65	5	6	29	400	14	4	3	5	53
24539	14	77	4	17	13	112	83	11	13	9		65	5	19	29		14	4	2	5	53

Contact your Kohler engine parts supplier for any specifications not listed.

For Short Blocks, and Replacement Engines refer to Selection Guide TP-2253.

See Page 34 for Decal information.

SPECIFICATION NUMBER INDEX

Group Title & Number	Air Intake	Baffles & Shroud	Breather & Vent	Camshaft & Valves	Carburetor	Crankcase	Crankshaft	Cylinder Head	Dipstick	Electric Start	Exhaust	Flywheel	Fuel Pump	Governor	Ignition	Instrument Panel	Piston & Rod	Oil Pump	Oil Filter	Oil Pressure Cutout	Gasket Set
	1	2	3	4	5	7	8	9	10	11	12	13	14	17	18	19	22	25	29	32	39
Page	8	10	12	13	14	16	18	19	20	21	22	23	24	25	26	28	30	31	32	33	34

Spec. No.

Variation Number

**MODEL
M20**

49500	14	78	4	18	13	113	81	15	13	8	19	56	5	6	29	7	15	4	2	53	
49501	14	78	4	18	13	113	81	15	13	8	19	56	5	15	18	7	15	4	2	53	
49502	14	78	4	18	13	122	100	15	13	8	19	56	5	13	29	7	15	4	2	53	
49506	34	80	3	18	13	127	92	15	13	8	101	58	5	6	22	7	15	4	2	8	53
49508	30	85	3	18	13	115	93	15	14	8	20	200	5	6	31	7	15	4	8	8	53
49525	31	107	4	18	13	128	92	15	13	8	16	65	301	6	29	7	15	4	4	53	

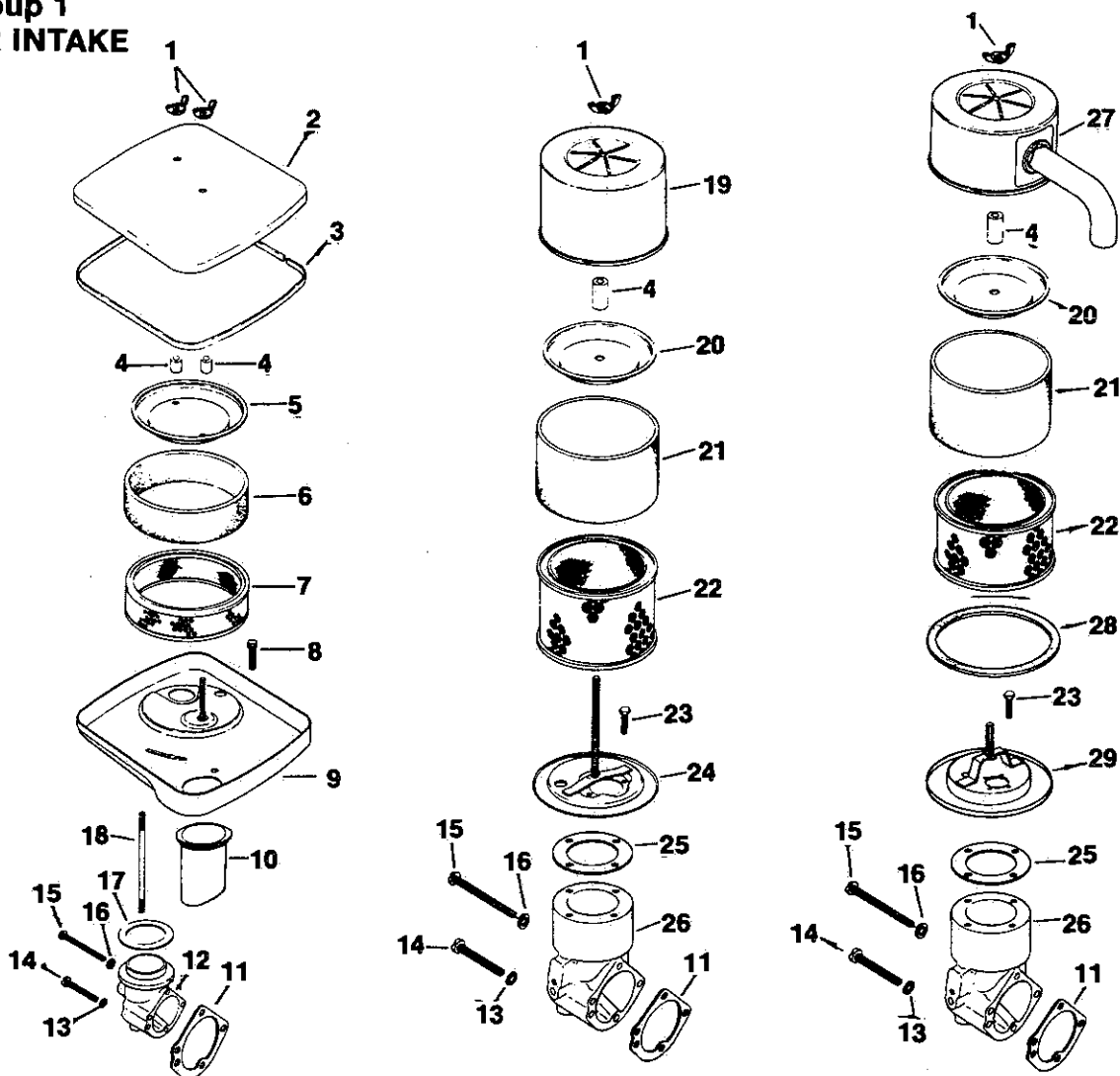
Contact your Kohler engine parts supplier for any specifications not listed.

For Short Blocks, and Replacement Engines refer to Selection Guide TP-2253.

See Page 34 for Decal information.

M18 & M20

Group 1 AIR INTAKE



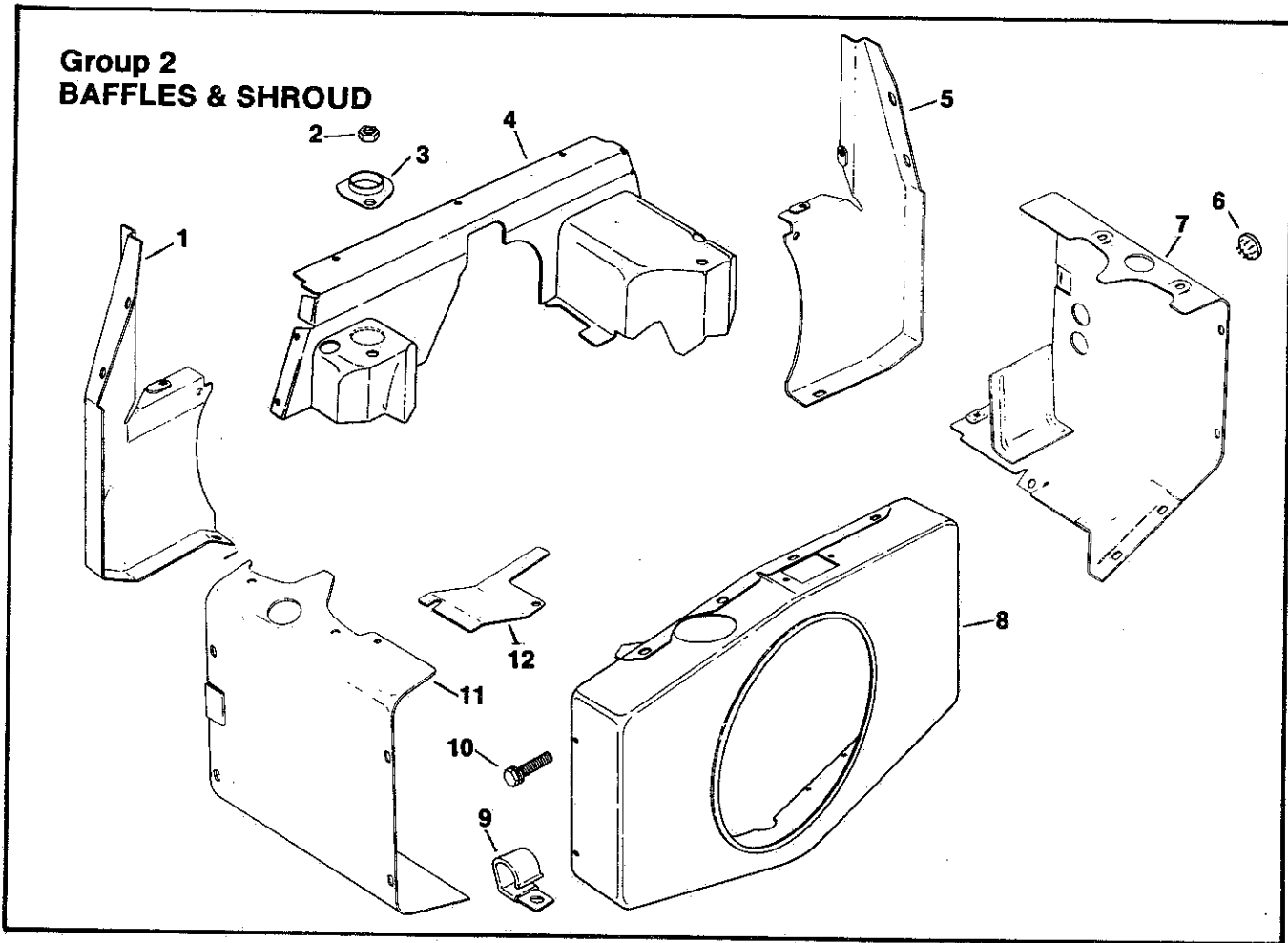
Index Number	Description Variation Number	Part Number	Index Number	Description Variation Number	Part Number
1	Wing nut 1/4-20 13, 29, 30, 34	X-276-7	8	Screw, hex. wash. hd. 1/4-20 x 7/16 14, 31	X-67-83
1	Wing nut 1/4-20 (2) 14, 31	X-276-7	9	Base, air cleaner 14, 31	52 201 07
2	Cover, air cleaner—Square 14, 31	52 082 02	10	Tube, air intake 14, 31	47 134 02
3	Seal, air cleaner cover 14, 31	52 032 01	11	Gasket, elbow 13, 14, 29, 30, 31, 34	277069
4	Seal, element cover 13, 29, 30, 34	231032	12	Elbow, air intake 14, 31	52 054 17
4	Seal, element cover (2) 14, 31	231032	13	Washer, I.T. #10 (2) 13, 14, 29, 30, 31, 34	X-22-9
5	Cover, air cleaner element 14, 31	52 082 03	14	Screw, sltd. pan hd. 10-32 x 1-1/2 (2) 13, 14, 29, 30, 31, 34	X-50-57
6	Precleaner 14, 31	52 083 01	15	Screw, sltd. pan hd. 10-32 x 2-1/4 13, 14, 29, 30, 31, 34	X-50-37
7	Element, air cleaner 14, 31	47 083 01	16	Washer, plain #10 13, 34, 29, 30, 31, 34	X-25-79

M18 & M20

AIR INTAKE
(Cont'd)

Index Number	Description Variation Number	Part Number	Index Number	Description Variation Number	Part Number
17	Gasket, air cleaner 14, 31	52 055 04	25	Gasket, air cleaner 13, 29, 30, 34	277093
18	Stud 1/4-20 x 4-3/4 14, 31	X-352-38	26	Elbow, air cleaner 13, 29, 30, 34	52 054 15
19	Cover, air cleaner—Dome 13, 30	45 082 01	27	Cover, air cleaner—Anti-Icing— 4-7/16" tube 29	52 254 12
20	Cover, air cleaner element 13, 29, 30, 34	52 082 04	27	Cover, air cleaner—1-1/2" tube 34	52 096 26
21	Precleaner 13, 29, 30, 34	45 083 01	28	Seal, air cleaner cover 29, 34	237423
22	Element 13, 29, 30, 34	45 083 02	29	Base, air cleaner 29, 34	52 201 06
23	Screw, hex. wash. hd. 10-32 x 9/16 (4) 13, 29, 30, 34	X-67-98			
24	Base, air cleaner 13, 30	52 094 06			

M18 & M20



Index Number	Description Variation Number	Part Number	Index Number	Description Variation Number	Part Number
1	Duct, #1 side air 81, 84, 94, 98	52 281 14	7	Baffle, #1 cylinder head (8-3/4" wide with 3" wide rear cyl. baffle, 1-1/4" slit and two 7/8" dia. holes 1-7/8" up)	81, 84, 94, 98
1	Duct, #1 side air 85, 107	52 281 15	7	Baffle, #1 cylinder head (6-1/8" wide with 5-1/8" wide rear cylinder baffle)	83
2	Nut, hex 5/16-18 (2) 81, 84, 85, 94, 98, 107	X-82-2	7	Baffle, #1 cylinder head (8-3/4" wide with 5-1/8" wide rear cyl. baffle, 1-1/4" slit and two 7/8" dia. holes 1-7/8" up)	85, 107
3	Heater, plate 81	52 146 06	7	Baffle, #1 cylinder head (8-3/4" wide with 3" wide rear cyl. baffle and two 7/8" dia. holes 3-1/8" up)	100
4	Cover, air duct 84, 85, 94, 98, 107	52 282 01	8	Housing, blower-w/air intake tube hole 77, 78, 94, 98, 107	52 027 18
4	Cover, air duct-w/heater plate hole 81	52 282 03	8	Housing, blower 79, 80, 81, 83, 84, 85, 100, 110	52 027 19
5	Duct, #2 side air 81, 84, 94, 98	52 281 09	9	Clip, fuel line 110	48 154 01
5	Duct, #2 side air 85, 107	52 281 05			
6	Plug, button (2) 81, 84, 98, 107	X-301-8			
7	Baffle, #1 cylinder head (6-1/8" wide with 3" wide rear cylinder baffle) 77, 79, 110	52 124 23			
7	Baffle, #1 cylinder head (6-1/8" wide with 5-1/8" wide rear cylinder baffle) 78, 80	52 124 05			

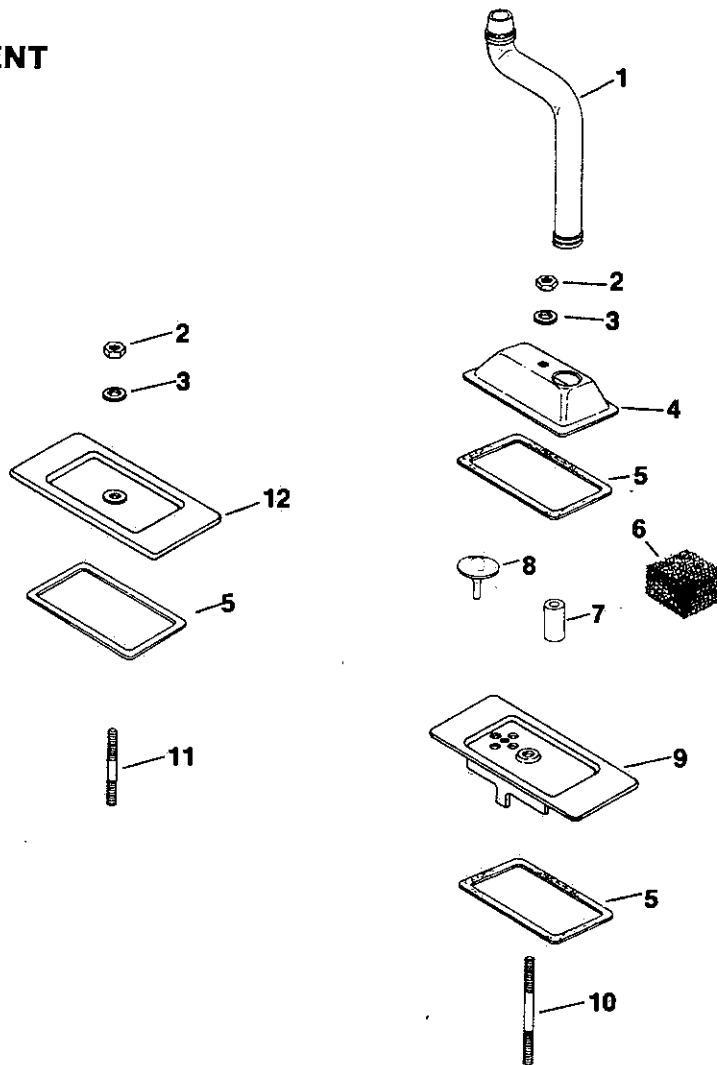
M18 & M20

**BAFFLES & SHROUD
(Cont'd)**

Index Number	Description Variation Number	Part Number	Index Number	Description Variation Number	Part Number
10	Screw, hex. wash. hd. 1/4-20 x 7/16 (19) 77, 78, 79, 80, 83, 110	X-67-83	11	Baffle, #2 cylinder head (8-3/4" wide with 5-1/8" wide rear cylinder baffle and 1-1/4" slit)	
10	Screw, hex. wash. hd. 1/4-20 x 7/16 (26) 81, 84, 85, 94, 98, 107	X-67-83		83	52 063 16
10	Screw, hex. wash. hd. 1/4-20 x 7/16 (17) 100	X-67-83	11	Baffle, #2 cylinder head (8-3/4" wide with 1-1/4" slit)	
11	Baffle, #2 cylinder head (8-3/4" wide with 3" wide rear cylinder baffle and 1-1/4" slit)			100	52 124 02
	77, 79, 81, 84, 94, 98, 110	52 124 30	12	Baffle, #2 cylinder top 77, 78, 79, 80, 81, 83, 84, 85, 94, 98, 100, 107, 110	52 063 01
11	Baffle, #2 cylinder head (8-3/4" wide with 5-1/8" wide rear cylinder baffle)				
	78, 80, 85, 107	52 124 28			

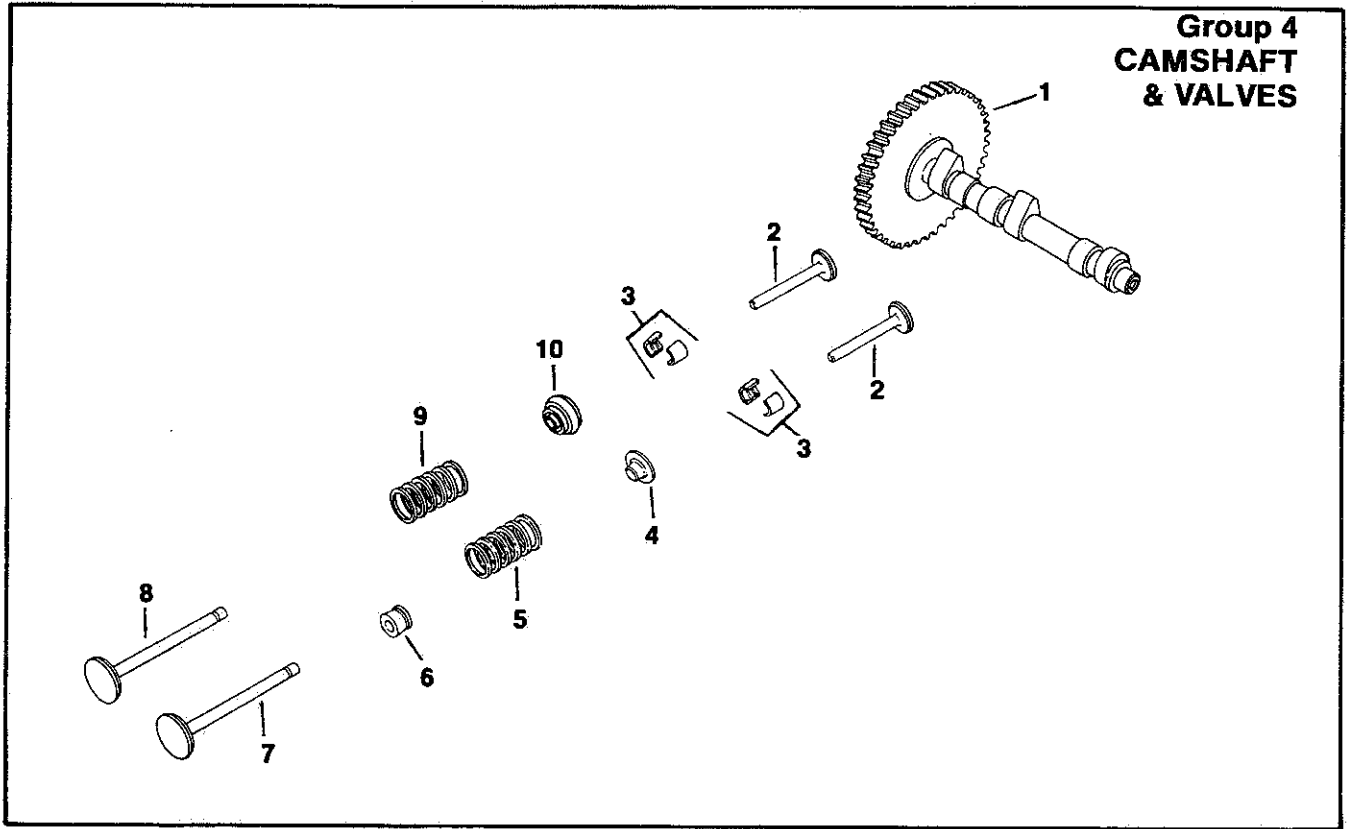
M18 & M20

Group 3 BREATHER & VENT



Index Number	Description Variation Number	Part Number	Index Number	Description Variation Number	Part Number
1	Hose, breather 4-3/8" 3	52 326 05	7	Seal, breather 3, 4	52 032 04
1	Hose, breather 3-5/8" 4	52 326 06	8	Valve, umbrella 3, 4	52 462 01
2	Nut, hex 1/4-20 (2) 3, 4	X-81-1	9	Cover, #1 lower cylinder valve 3, 4	52 096 22
3	Washer, plain 1/4 (2) 3, 4	X-25-12	10	Stud, #1 cyl. valve cover—1/4-20 x 3-1/4 3, 4	275220
4	Cover, #1 upper cylinder valve 3, 4	52 096 08	11	Stud, #2 cyl. valve cover—1/4-20 x 2-1/4 3, 4	X-352-39
5	Gasket, valve cover (3) 3, 4	52 055 01	12	Cover, #2 cylinder valve 3, 4	52 096 18
6	Filter, breather 3, 4	231419			

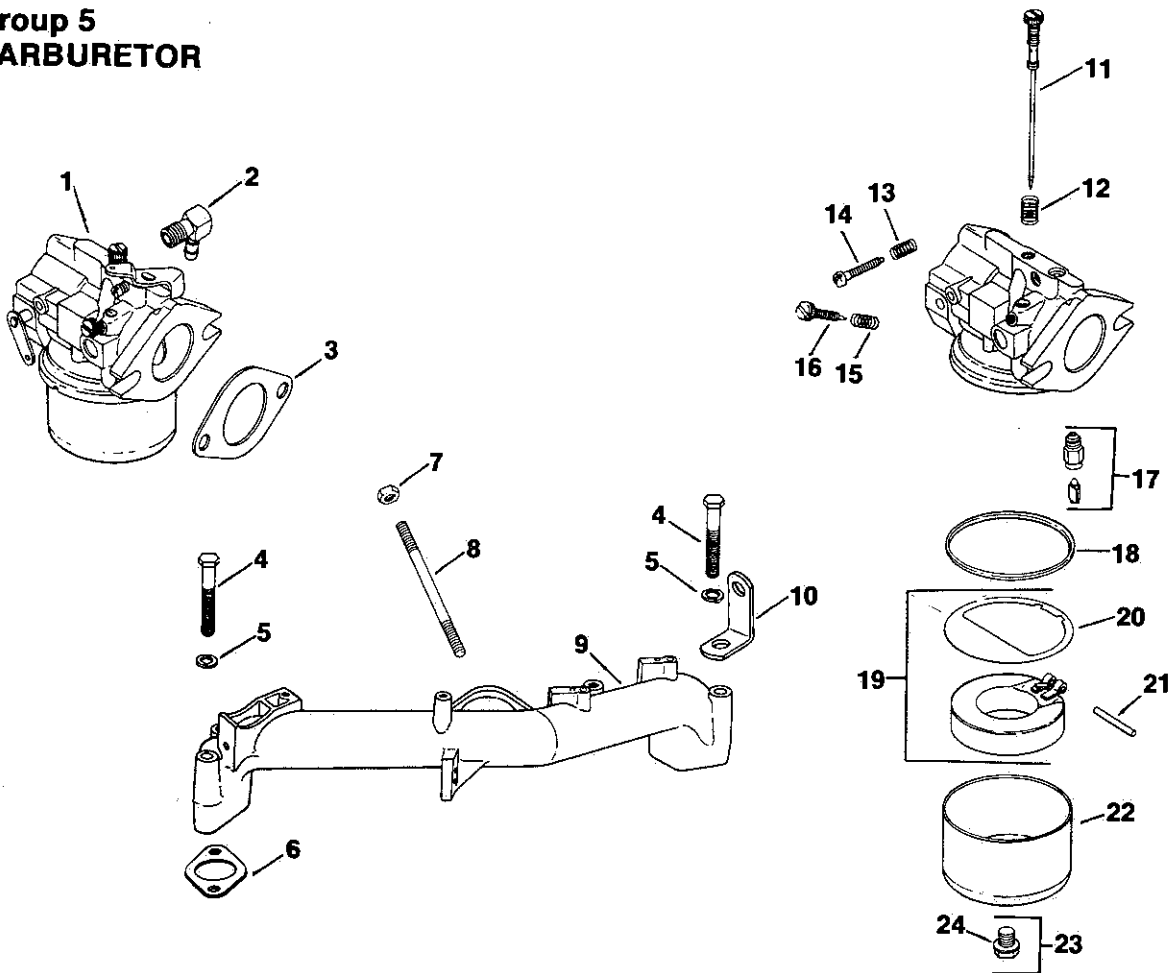
M18 & M20



Index Number	Description Variation Number	Part Number	Index Number	Description Variation Number	Part Number
1	Camshaft 17, 18	52 012 07	7	Valve, intake (2) 17	52 017 08
2	Tappet (4) 17, 18	52 019 03	7	Valve, intake (2) 18	52 017 07
3	Kit, retainer (4) 17, 18	41 755 10	8	Valve, exhaust (2) 17	52 016 02
4	Retainer, intake valve spring (2) 17, 18	230011	8	Valve, exhaust (2) 18	52 016 04
5	Spring, intake valve (2) 17, 18	25 089 01	9	Spring, exhaust valve (2) 17, 18	25 089 01
6	Seal, intake valve stem (2) 17, 18	52 032 13	10	Rotator, exhaust valve (2) 17, 18	52 413 01

M18 & M20

Group 5 CARBURETOR



Index Number	Description Variation Number	Part Number	Index Number	Description Variation Number	Part Number
1	Carburetor assembly (Includes 11 thru 24) 12	52 053 18	10	Strap, lifting (2) 12, 13	52 445 02
1	Carburetor assembly (Includes 11 thru 24) 13	52 053 09	11	Needle, main fuel adj. 12, 13	52 103 01
2	Connector, 90° hose (For 1/4" I.D. rubber hose) 12, 13	25 155 02	12	Spring, main fuel 12, 13	200383
3	Gasket, carburetor 12, 13	271030	13	Spring, idle speed 12, 13	232555
4	Screw, H.C. 5/16-18 x 2-3/4 (4) 12, 13	X-6-8	14	Screw, idle speed adj. 12, 13	232556
5	Washer, lock 5/16 (4) 12, 13	X-21-1	15	Spring, idle fuel 12, 13	200380
6	Gasket, intake manifold (2) 12, 13	52 041 09	16	Needle, idle fuel adj. 12, 13	277210
7	Nut, hex. jam 5/16-18 (2) 12, 13	X-77-2	17	Fuel inlet needle & seat <i>Available only in carburetor repair kit</i> 25 757 02	
8	Stud 5/16-18 x 1 (2) 12, 13	X-352-37	18	Gasket, bowl 12, 13	200375*
9	Manifold, intake 12, 13	52 164 06	19	Float kit (Includes 20) 12, 13	25 757 03

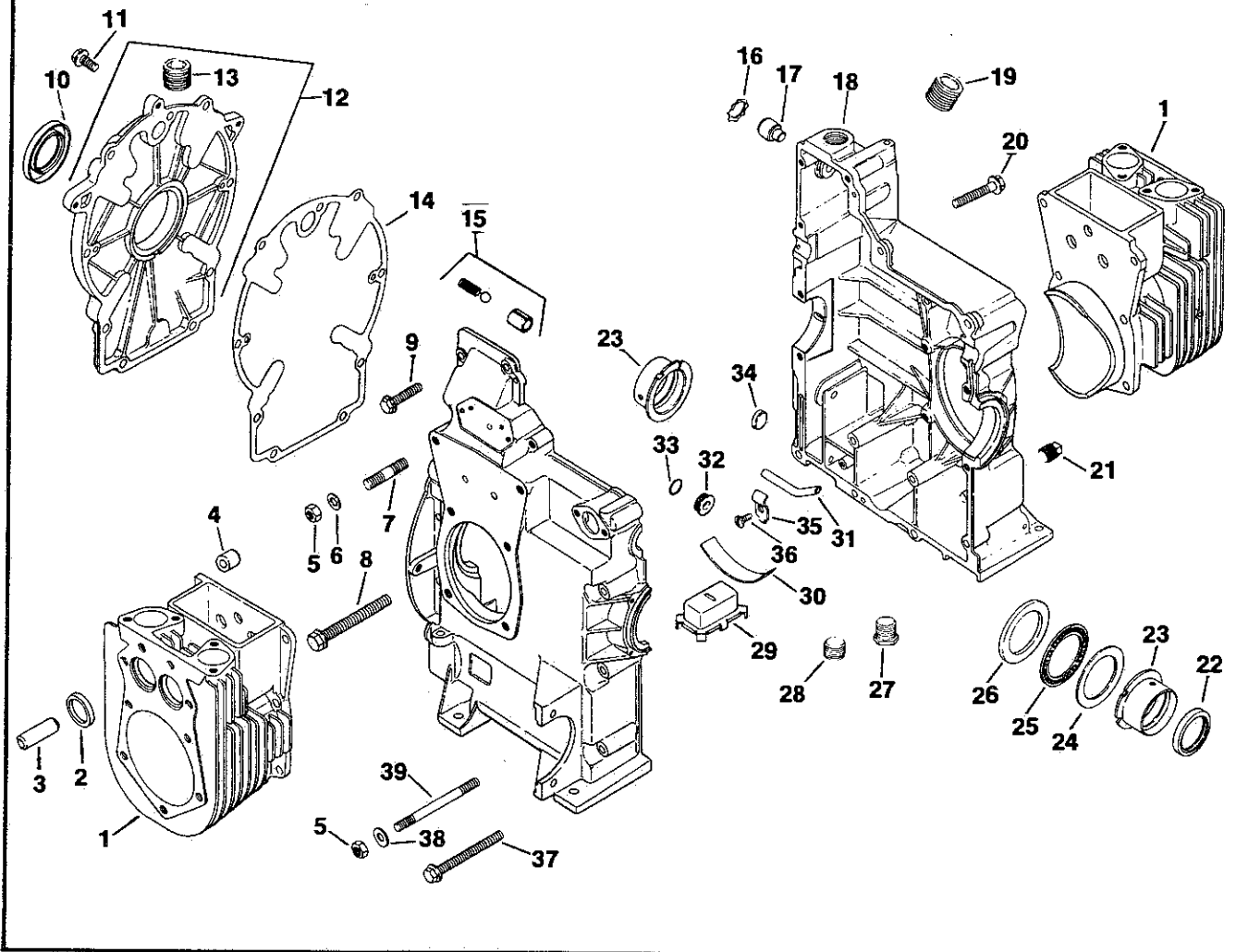
M18 & M20

CARBURETOR
(Cont'd)

Index Number	Description Variation Number	Part Number	Index Number	Description Variation Number	Part Number
20	Gasket, bowl baffle 12, 13	25 041 02*		Not illustrated	
21	Pin, float hinge 12, 13	200376*		Kit, carburetor repair 12, 13	25 757 02
22	Bowl, fuel 12, 13	235448		Kit, throttle & choke repair 12, 13	25 757 05
23	Screw, bowl retainer (Includes 24) 12, 13	47 100 06			
24	Gasket, bowl retainer screw 12, 13 <i>*included in Carburetor repair kit 25 757 02</i>	200372*			

M18 & M20

Group 7 CRANKCASE



Index Number	Description Variation Number	Part Number	Index Number	Description Variation Number	Part Number
1	Kit, cylinder barrel (2) (Includes 2 thru 4) 112, 114, 117, 118, 121	52 755 51	7	Step stud 5/16-18 x 3/4", 3/8-16 x 5/8", 2" long (12) 112, 113, 114, 115, 117, 118, 121, 122, 127, 128	52 072 12
1	Barrel, cylinder (2) (Includes 2 & 3) 113, 115, 122, 127, 128	52 565 51	8	Screw, hex. flange 3/16-16 x 3-5/8 (2) 112, 113, 114, 115, 117, 118, 121, 122, 127, 128	25 086 13
2	Insert, valve seat (4) 112, 113, 114, 115, 117, 118, 121, 122, 127, 128	230265	9	Screw, hex. flange 5/16-18 x 1-1/2 (3) 112, 113, 114, 115, 117, 118, 121, 122, 127, 128	25 086 10
3	Guide, valve (4) 112, 113, 114, 115, 117, 118, 121, 122, 127, 128	52 316 06	10	Seal, rear oil 1-3/8" I.D. 112, 114, 117, 118, 121, 122, 127, 128	X-583-5
4	Bushing, locating (2) 112, 114, 117, 118, 121	52 158 04	10	Seal, rear oil 1-1/2" I.D. 113, 115	52 032 08
5	Nut, hex 5/16-18 (16) 112, 113, 114, 115, 117, 118, 121, 122, 127, 128	X-82-2	11	Screw, hex. wash. hd. 5/16-18 x 1 (9) 112, 113, 114, 115, 117, 118, 121, 122, 127, 128	X-802-9
6	Washer, flat 5/16 (12) 112, 113, 114, 115, 117, 118, 121, 122, 127, 128	52 468 12	12	Kit, closure plate (Includes 13) 112, 113, 128	52 755 57

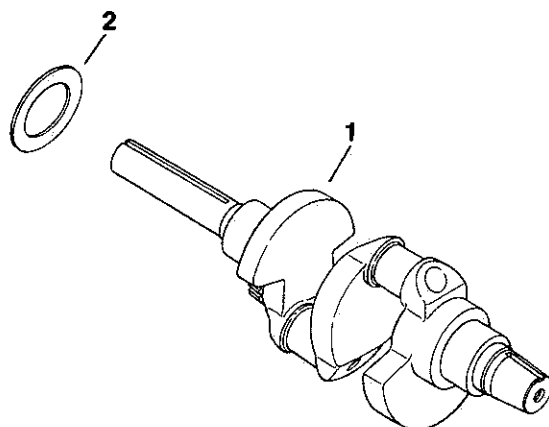
M18 & M20

CRANKCASE
(Cont'd)

Index Number	Description Variation Number	Part Number	Index Number	Description Variation Number	Part Number
12	Kit, closure plate (Includes 13) 114, 115, 117, 118, 127	52 755 56	25	Bearing, thrust 118	52 030 13
12	Kit, closure plate (Includes 13) 121, 122	52 755 58	26	Washer, thrust 118	52 114 04
13	Plug, hex. ctsk. 1/8 N.P.T.F. 112, 113, 114, 115, 117, 118, 121, 122, 127, 128	X-75-23	27	Plug, bottom drain 3/8 N.P.T.F. 114	52 139 02
14	Gasket, closure plate 112, 113, 114, 115, 117, 118, 121, 122, 127, 128	52 041 15	28	Plug, hex. ctsk. 3/8 N.P.T.F. 112, 113, 114, 115, 117, 118, 121, 122, 127, 128	X-75-32
15	Kit, oil relief 112, 113, 114, 115, 117, 118, 121, 122, 127, 128	52 755 50	29	Housing, oil pickup 112, 113, 114, 115, 117, 118, 121, 122, 127, 128	52 095 03
16	Ring, retaining 112, 113, 114, 115, 117, 118, 121, 122, 127, 128	X-269-43	30	Clip, spring 112, 113, 114, 115, 117, 118, 121, 122, 127, 128	52 237 02
17	Shaft, governor 112, 113, 114, 115, 117, 118, 121, 122, 127, 128	52 078 05	31	Tube, oil pickup 112, 113, 114, 115, 117, 118, 121, 122, 127, 128	52 123 10
18	Crankcase (Service with a SHORT BLOCK. Refer to M18-M20 Selection Guide TP-2253.)		32	Plug 3/4" O.D. 112, 113, 114, 115, 117, 118, 121, 122, 127, 128	52 139 08
19	Plug, hex. ctsk. 1/16-27 N.P.T.F. 112, 113, 114, 115, 117, 118, 121, 122, 127, 128	52 139 07	33	O-Ring 112, 113, 114, 115, 117, 118, 121, 122, 127, 128	52 141 02
20	Screw, hex. flange 5/16-18 x 2 (2) 112, 113, 114, 115, 117, 118, 121, 122, 127, 128	25 086 12	34	Plug, cup 5/16 112, 113, 114, 115, 117, 118, 121, 122, 127, 128	X-702-15
21	Plug, solid sq. hd. 3/8 N.P.T.F. 112, 113, 115, 117, 118, 121, 122, 127, 128	X-75-10	35	Clamp, tube 112, 113, 114, 115, 117, 118, 121, 122, 127, 128	52 237 05
22	Seal, front oil 112, 113, 114, 115, 117, 118, 121, 122, 127, 128	52 032 10	36	Screw, hex. wash. hd. 10-32 x 7/16 112, 113, 114, 115, 117, 118, 121, 122, 127, 128	X-67-64
23	Bearing, sleeve (2) 112, 113, 114, 115, 117, 118, 121, 122, 127, 128	52 030 10	37	Screw, hex. flange 5/16-18 x 3-1/2 (6) 112, 113, 114, 115, 117, 118, 121, 122, 127, 128	25 086 11
	Bearing, sleeve .010	52 030 11	38	Washer, plain 5/16 (4) 112, 113, 114, 115, 117, 118, 121, 122, 127, 128	41 468 01
	Bearing, sleeve .020	52 030 12	39	Stud 5/16-18 x 4-1/8 (2) 112, 113, 114, 115, 117, 118, 121, 122, 127, 128	X-352-33
24	Washer, thrust 118	52 468 09			

M18 & M20

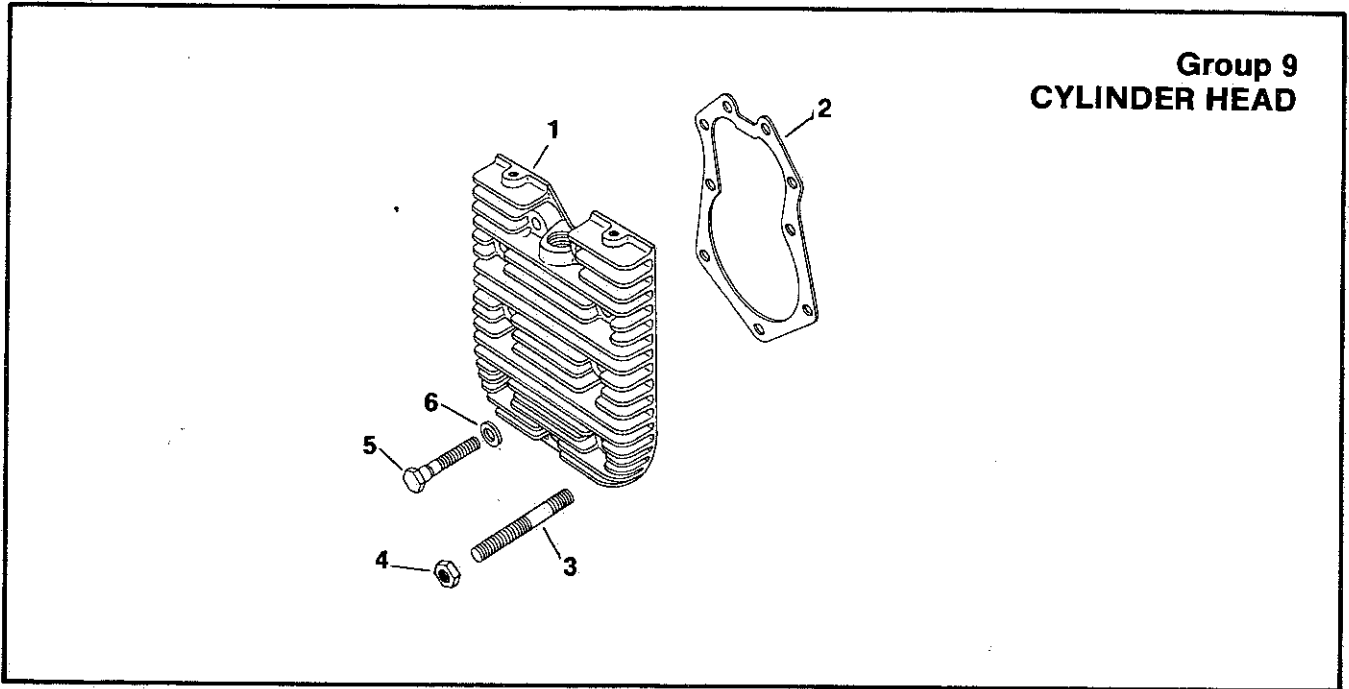
Group 8 CRANKSHAFT



Index Number	Description Variation Number	Part Number	Index Number	Description Variation Number	Part Number
1	Crankshaft (3-25/32" x 1-1/8" tapped P.T.O.) 80	52 014 63	1	Crankshaft (2-23/32" x 1-1/4" tapped P.T.O.) 93	52 014 71
1	Crankshaft (4-29/64" x 1-7/16" tapped P.T.O.) 81	52 014 69	1	Crankshaft (3-51/64" x 1-3/8" taper—tapped P.T.O.) 99	52 014 80
1	Crankshaft (2-37/64" x 1-1/8" tapped P.T.O.) 83	52 014 65	1	Crankshaft (3-51/64" x 1-3/8" taper—tapped P.T.O.) 100	52 014 83
1	Crankshaft (2-51/64" x 1-1/8" tapped P.T.O.) 84	52 014 66	1	Crankshaft (3-25/32" x 1-1/8" tapped P.T.O.) 114	52 014 86
1	Crankshaft (3-9/16" x 1" tapped P.T.O.) 85	52 014 64	2	Washer, thrust .119/.122 (A.R.) 80, 81, 83, 84, 85, 88, 92, 93, 99, 100, 114	52 468 03
1	Crankshaft (3-9/16" x 1-14 thread—tapped P.T.O.) 88	52 014 68	2	Washer, thrust .128/.131 80, 81, 83, 84, 85, 88, 92, 93, 99, 100, 114	52 468 04
1	Crankshaft (3-25/32" x 1-1/8" tapped P.T.O.) 92	52 014 76	2	Washer, thrust .137/.140 (A.R.) 80, 81, 83, 84, 85, 88, 92, 93, 99, 100, 114	52 468 05

M18 & M20

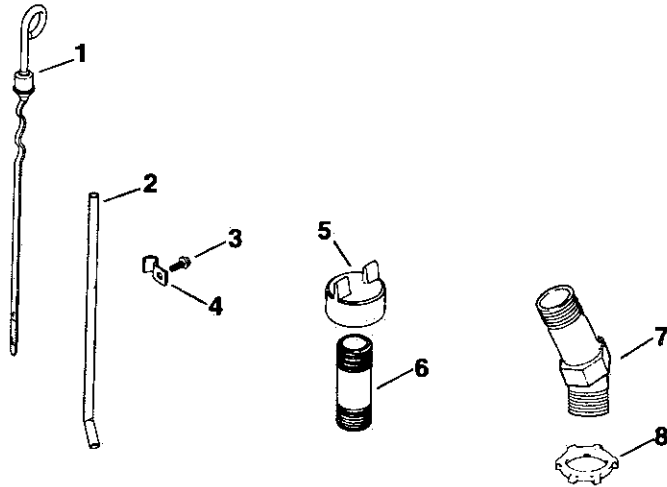
Group 9 CYLINDER HEAD



Index Number	Description Variation Number	Part Number	Index Number	Description Variation Number	Part Number
1	Head, cylinder (2) 11	52 015 08	4	Nut, hex. 5/16-18 (8) 15	X-82-2
1	Head, cylinder (2) 15	52 015 09	5	Screw, hex. hd. 5/16-18 x 1-1/2 (18) 11	41 086 02
2	Gasket, cylinder head (2) 11, 15	52 041 18	5	Screw, hex. hd. 5/16-18 x 1-1/2 (10) 15	41 086 02
3	Stud 5/16-18 x 2 (8) 15	52 072 15	6	Washer, plain 5/16 (18) 11, 15	220534

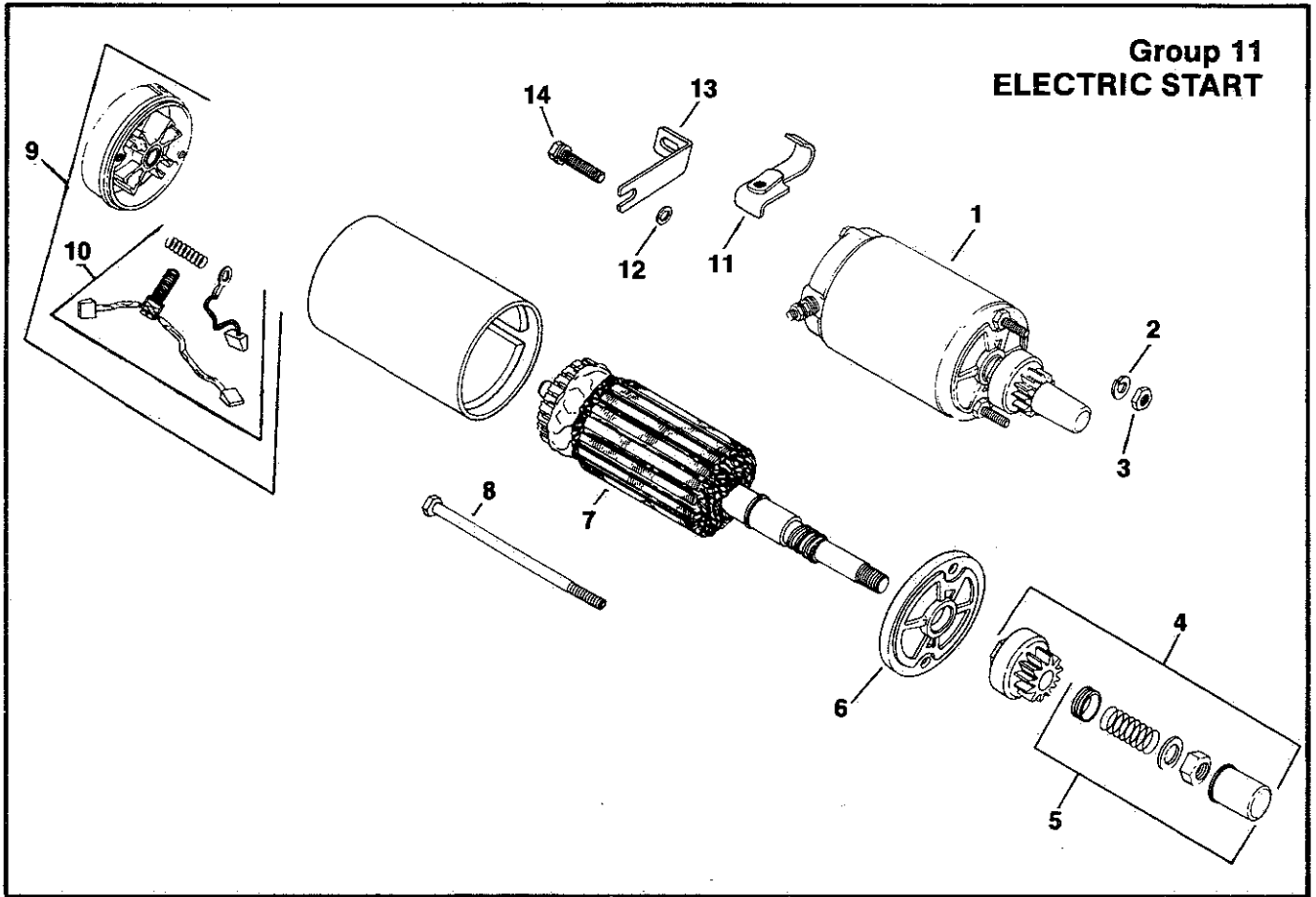
M18 & M20

Group 10 DIPSTICK



Index Number	Description Variation Number	Part Number	Index Number	Description Variation Number	Part Number
1	Dipstick 11-5/16" blade 13, 14	52 038 04	5	Cap, pipe 13, 14	52 173 01
2	Tube, oil level 13, 14	52 123 09	6	Pipe, oil fill 3/4 I.P. x 2-1/2" 13	46 136 02
3	Screw, tapping 10-24 x 3/8 13, 14	X-67-64	7	Tube, oil fill 14	52 134 04
4	Clip, tube 13, 14	52 154 01	8	Nut, lock 14	X-427-1

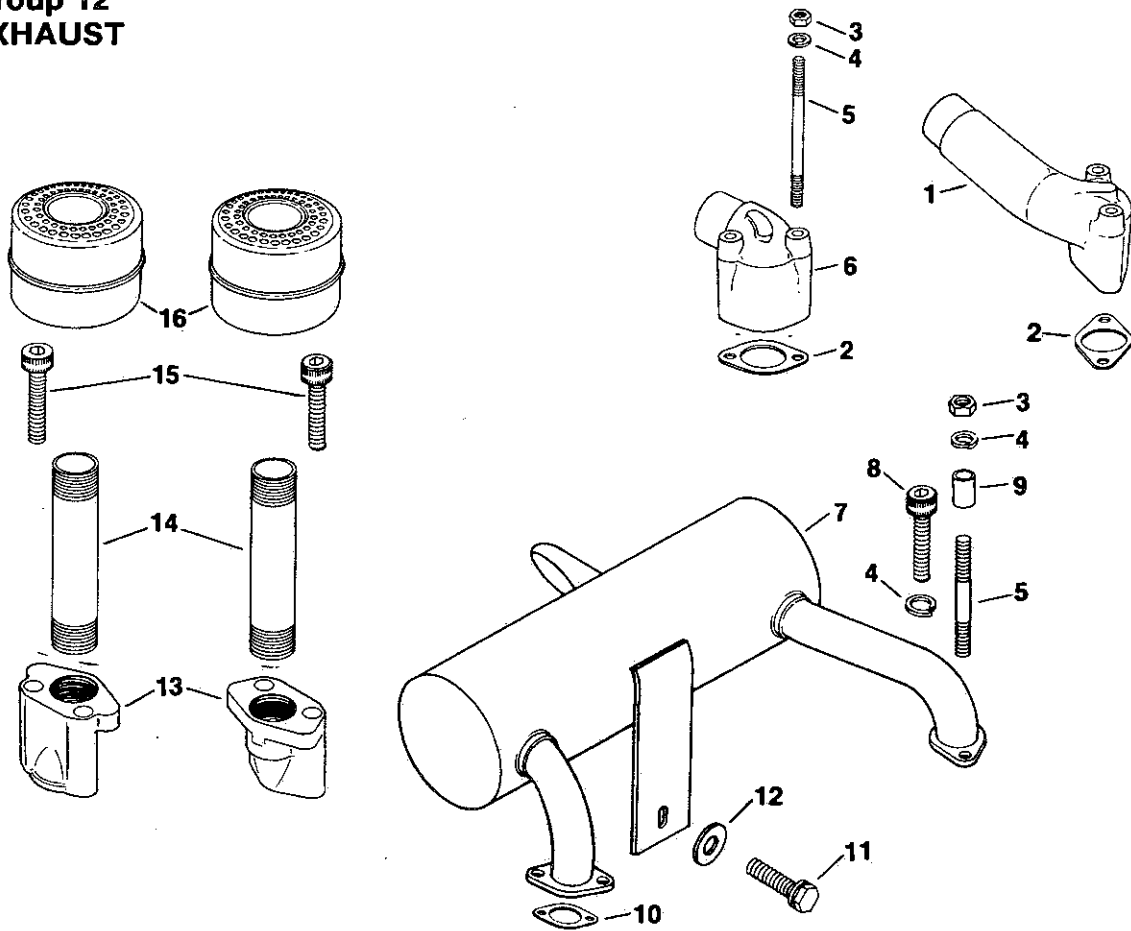
M18 & M20



Index Number	Description Variation Number	Part Number	Index Number	Description Variation Number	Part Number
1	Starter assembly (Includes 4 thru 10) 9	52 098 03	8	Bolt, thru 1/4-20 x 6-7/8 (2) 8	52 211 03
1	Starter assembly (Includes 4 thru 10) 8	52 098 06	9	Cap, commutator end assembly (Includes 10) 9	48 227 04
2	Washer, split lock 1/4 (2) 8, 9	X-20-1	9	Cap, commutator end assembly (Includes 10) 8	52 227 07
3	Nut, hex 1/4-20 (2) 8, 9	X-81-1	10	Kit, brush & spring 9	48 755 15
4	Kit, drive (Includes 5) 8, 9	52 755 05	10	Kit, brush & spring 8	52 755 15
5	Kit, drive parts 8, 9	52 755 08	11	Bracket, mounting 8	52 126 09
6	Cap, drive end 8, 9	52 227 01	12	Washer, plain 1/4 8	X-25-53
7	Armature 9	52 170 02	13	Bracket, starter support 8	52 126 03
7	Armature 8	52 170 03	14	Screw, hex. wash. hd. 1/4-20 x 5/8 8	52 086 11
8	Bolt, thru 1/4-20 x 5-7/8 (2) 9	52 211 01		Not illustrated	
				Tag, caution 8,9	25 450 03

M18 & M20

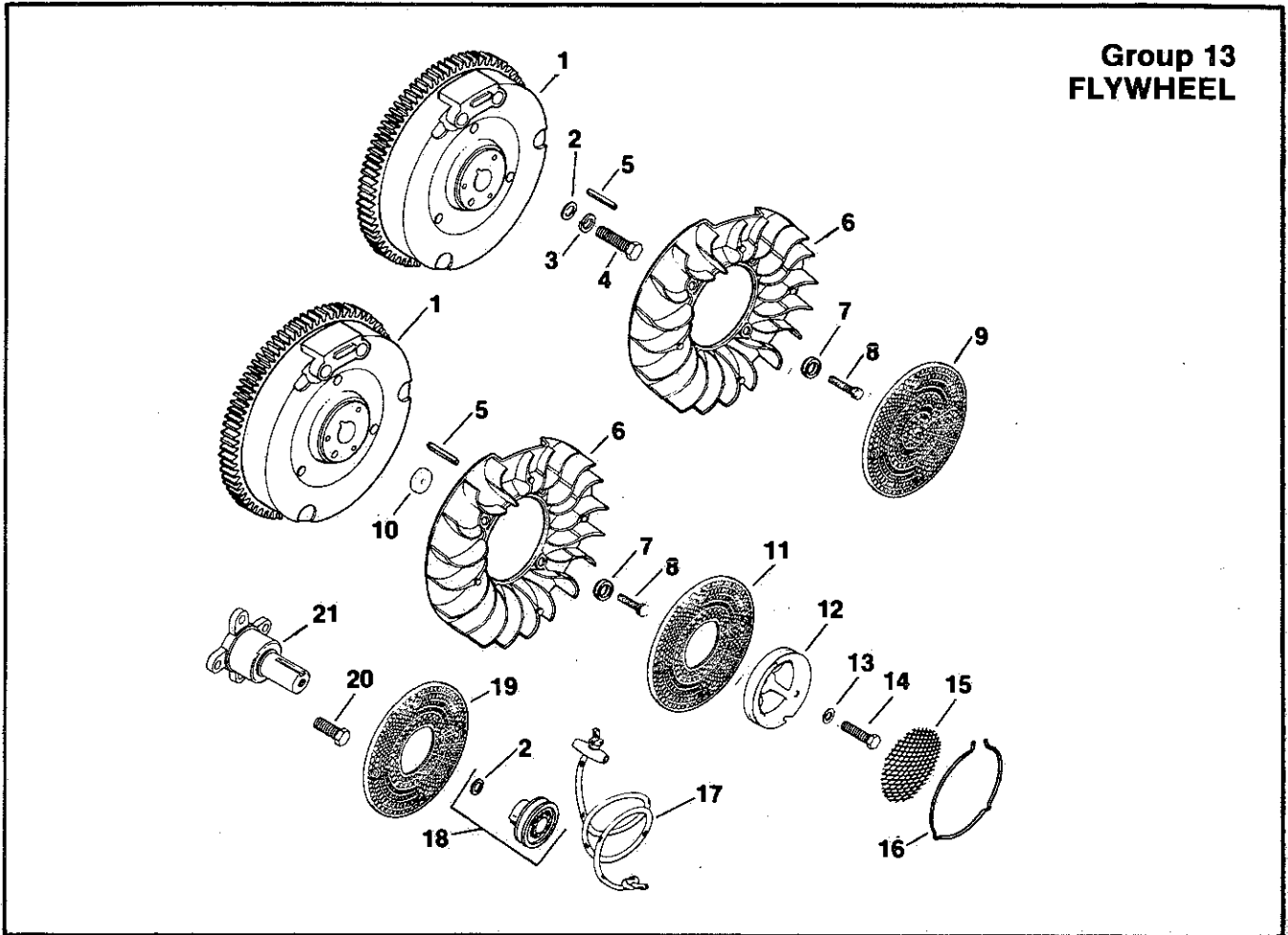
Group 12 EXHAUST



Index Number	Description Variation Number	Part Number	Index Number	Description Variation Number	Part Number
1	Manifold, #1 exhaust 7, 8	52 054 05	8	Screw, hex. socket hd. cap 5/16-18 x 3/4 (2)	
2	Gasket, exhaust (2) 7, 8, 19, 100	52 041 10	8	Screw, hex. socket hd. cap 5/16-18 x 3/4 (4)	X-55-6
3	Nut, hex. 5/16-18 (2) 8, 16, 20, 21	X-82-2	9	Spacer 2-1/4" long (2) 16, 20, 21	X-55-6
3	Nut, hex. 5/16-18 (4) 7	X-82-2	10	Gasket, exhaust (2) 16, 20, 21, 24, 101, 102	52 112 08
4	Washer, lock 5/16 (4) 7, 8, 16, 20, 21, 24	X-21-1	11	Screw, H.C. sems 1/4-20 x 5/8 16, 20, 21, 24, 102	52 041 14
5	Stud 5/16-18 x 4 (2) 8, 16, 20, 21	52 072 13	12	Washer, plain 1/4 16, 20, 21, 24, 102	X-132-5
5	Stud 5/16-18 x 4 (4) 7, 101	52 072 13	13	Adapter, exhaust (2) 19	X-25-73
5	Stud 5/16-18 x 4-7/8 (2) 8	X-352-43	14	Nipple, pipe 6" long (2) 19	52 029 13
6	Manifold, #2 exhaust 7, 8	52 054 06	15	Screw, hex. socket hd. cap 5/16-18 x 2-1/4 (4)	25 136 05
7	Muffler (3" cutaway extension) 16	52 068 05	16	Muffler (2) 19	X-55-9
7	Muffler (5" angled down extension) 20	52 068 11			275679
7	Muffler (2" extension) 21, 24	52 068 06			

M18 & M20

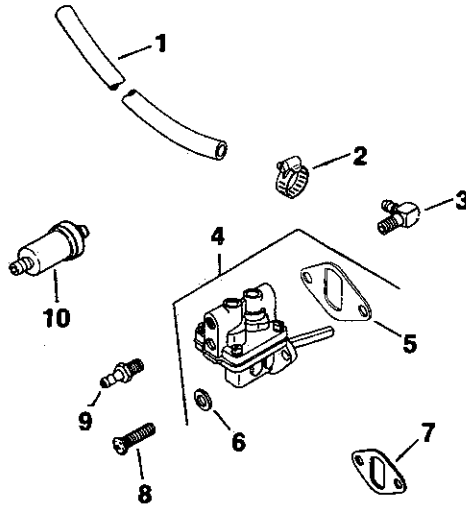
Group 13 FLYWHEEL



Index Number	Description Variation Number	Part Number	Index Number	Description Variation Number	Part Number
1	Flywheel 56, 57, 58, 65, 66, 200, 201	52 025 36	13	Washer, plain 3/8" I.D., 1-1/4" O.D. 66	52 114 01
2	Washer, plain 3/8" I.D., 1-3/8" O.D. 56, 57, 58, 65, 66, 200, 201	52 114 02	14	Screw, hex. mach. 3/8-24 x 1-3/4 66	47 086 18
3	Washer, lock 3/8 56, 58, 65, 200, 201	X-22-1	15	Screen 66	230098
4	Screw, hex. mach. 3/8-24 x 1-1/4 56, 57, 58, 65, 200, 201	25 086 04	16	Retainer, screen 66	230363
5	Key, square 3/16 x 1-3/8 56, 57, 58, 65, 66, 200, 201	X-286-17	17	Rope 66	A-230099
6	Fan 56, 57, 58, 65, 66, 200, 201	25 157 01	18	Kit, drive cup (Includes 2) 57	52 755 61
7	Spacer 1/8" (4) 56, 57, 58, 65, 66, 200, 201	25 112 04	19	Screen, grass 2-1/4" dia. hole 65, 200, 201	25 162 03
8	Screw, hex. wash. hd. 1/4-20 x 5/8 (4) 56, 57, 58, 65, 66, 200, 201	25 086 21	20	Screw, H.C. 3/8-16 x 1 (4) 65	X-159-2
9	Screen, grass 56	25 162 01	20	Screw, H.C. 3/8-16 x 1 (2) 200	X-159-2
10	Spacer 5/8" 66	52 112 09	21	Shaft, front drive 65	235954
11	Screen, grass 3-1/2" dia. hole 57, 66	25 162 02			
12	Pulley, rope starting 66	47 093 01			

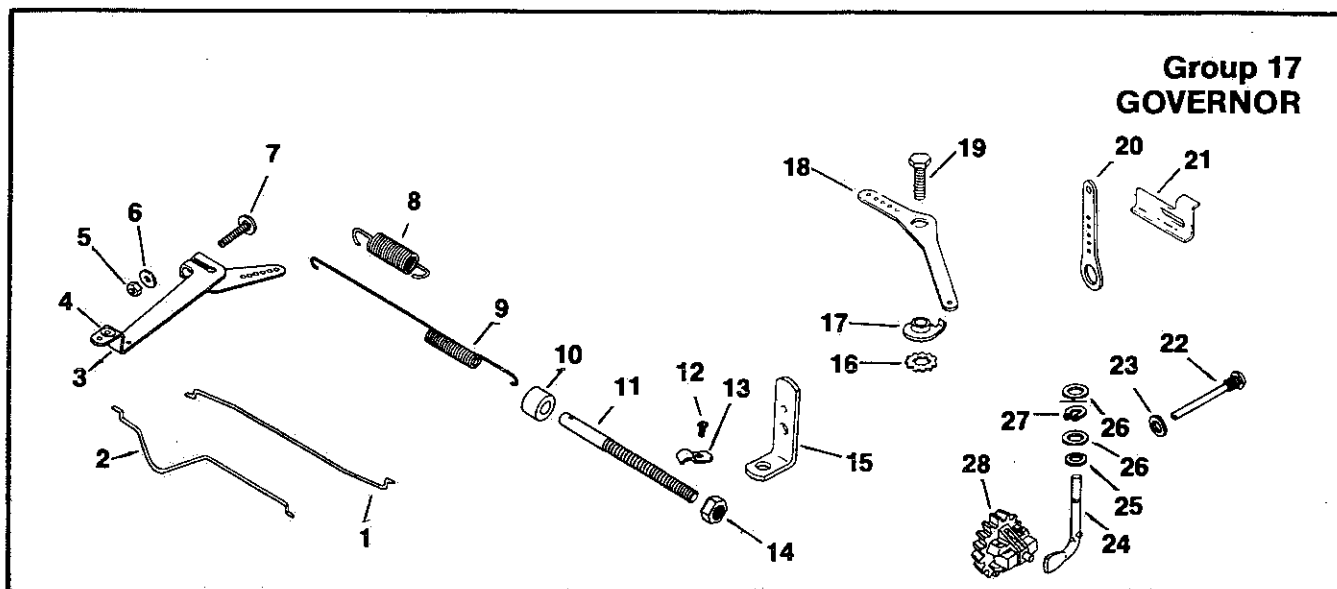
M18 & M20

Group 14 FUEL PUMP



Index Number	Description Variation Number	Part Number	Index Number	Description Variation Number	Part Number
1	Line, fuel 1/4" I.D. x 6-3/4" long 5, 6, 7, 10, 300, 301	52 353 04	6	Washer, plain 1/4 (2) 5, 6, 7, 10, 300, 301	X-25-63
2	Clamp, hose (2) 5, 6, 7, 10, 300, 301	X-426-9	7	Gasket, insulating 7	277649
3	Connector, 90° hose (For 1/4" I.D. rubber hose) 5, 7, 10, 301	25 155 02	8	Screw, pozidriv T.H. 1/4-20 x 5/8 (2) 5, 6, 7, 10, 300, 301	47 086 08
3	Connector, 90° hose (2) (For 1/4" I.D. rubber hose) 6, 300	25 155 02	9	Connector, straight hose (For 3/8" I.D. rubber hose) - 5, 7, 10	X-380-1
4	Pump, fuel assembly 5, 6, 7, 10, 300, 301	52 559 01	10	Filter, fuel 300, 301	45 050 01
5	Gasket, fuel pump 5, 6, 10, 300, 301	52 041 17			

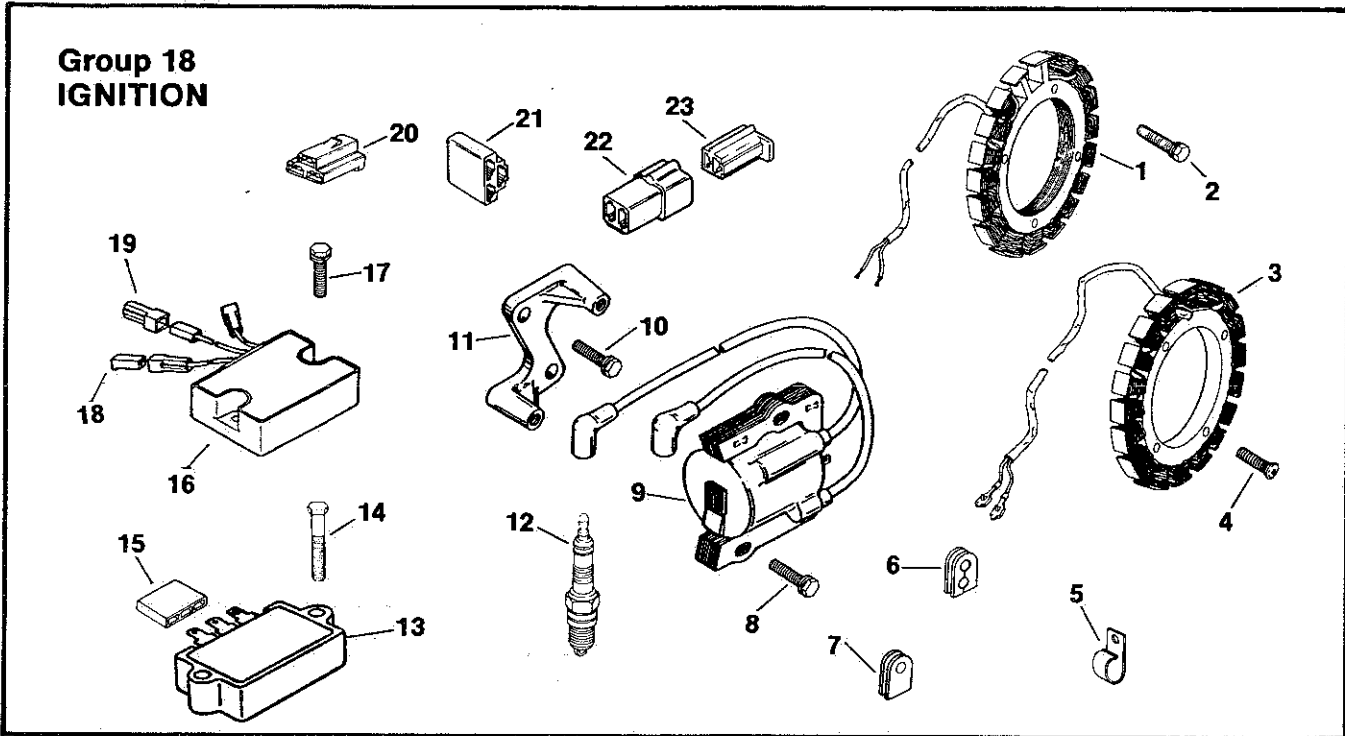
M18 & M20



Index Number	Description Variation Number	Part Number	Index Number	Description Variation Number	Part Number
1	Link, governor 6, 10, 13, 15, 19	52 354 03	15	Bracket, throttle cable 8	52 126 02
2	Link, governor 8	52 079 02	16	Washer, I.T./E.T. 1/4 6, 8	X-22-12
3	Arm, governor (Includes 4) 6, 8, 10, 13, 15, 19	52 187 02	17	Stop, governor 6, 8, 15, 19	234614
4	Bushing, governor arm 6, 8, 10, 13, 15, 19	45 158 03	18	Lever, speed control 8	52 119 03
5	Nut, hex 1/4-20 6, 8, 10, 13, 15, 19	X-81-1	19	Screw, H.C. 1/4-20 x 5/8 6, 8, 15, 19	X-5-1
6	Washer, plain 1/4 6, 8, 10, 13, 15, 19	X-25-72	20	Lever, speed control 6, 15, 19	52 119 01
7	Bolt, R.H. sq. neck 1/4-20 x 1 6, 8, 10, 13, 15, 19	52 211 04	21	Stop, hi-speed 15, 19	52 531 01
8	Spring, governor 6, 10, 15, 19	52 091 04	22	Pin, governor stop 6, 8, 10, 13, 15, 19	231355
9	Spring, governor 8, 10, 13	52 091 05	23	Washer, plain 1/4 6, 8, 10, 13, 15, 19	X-25-12
10	Spacer 10, 13	X-400-122	24	Shaft, governor 6, 8, 10, 13, 15, 19	52 078 04
11	Rod, speed control 10, 13	236258	25	Washer, plain 1/4 6, 8, 10, 13, 15, 19	X-25-102
12	Screw, hex. wash. hd. 10-24 x 7/16 (2) 6, 8, 10, 13, 15, 19	X-67-97	26	Washer, plain 1/4 (2) 6, 8, 10, 13, 15, 19	X-25-63
13	Clamp, cable (2) 6, 8, 10, 13, 19	235778	27	Retainer, governor 6, 8, 10, 13, 15, 19	X-269-28
13	Clamp, cable 15	235778	28	Kit, governor gear 6, 8, 10, 13, 15, 19	A-235743-S
14	Nut, hex 10-32 (2) 10, 13	X-70-3			

M18 & M20

Group 18 IGNITION



Index Number	Description Variation Number	Part Number	Index Number	Description Variation Number	Part Number
1	Kit, stator 15 amp. 15, 16, 18, 22, 23, 29, 31	237878	18	Connector, receptacle (2) 27	25 155 04
2	Screw, hex. wash. hd. 10-24 x 3/4 (4) 15, 16, 18, 22, 23, 29, 31	X-67-51	19	Connector, tab 27	25 155 03
3	Stator 25 amp. 27	25 085 05	20	Connector, female (3 contact) 23	52 155 06
4	Screw, hex. wash. hd. 10-24 x 1 (4) 27	X-67-85	21	Connector, female (3 contact) 16, 22, 31	236473
5	Clip, lead 16	48 154 02	22	Connector, female (2 contact) 15, 27, 29	52 155 04
6	Grommet 15, 16, 18, 22, 23, 27, 29, 31	52 313 02	23	Connector, male (2 contact) 15, 27, 29	41 155 03
7	Grommet 15, 16, 18, 22, 23, 27, 29, 31	220297	Not Illustrated		
8	Screw, hex. wash. hd. 1/4-20 x 1 (2) 15, 16, 18, 22, 23, 27, 29, 31	25 086 15	Lead, black, rectifier-regulator (5" - 14 gauge - uninsulated push on tab terminals) 15, 22, 23, 29, 31		
9	Module, ignition 15, 16, 18, 22, 23, 27, 29, 31	52 584 01			
10	Screw, hex. wash. hd. 1/4-20 x 7/8 (2) 15, 16, 18, 22, 23, 27, 29, 31	25 086 16	Lead, black, rectifier-regulator (16" - 14 gauge - uninsulated push on tab terminals) 16		
11	Bracket, module 15, 16, 18, 22, 23, 27, 29, 31	52 126 08			
12	Spark plug (2) 15, 16, 18, 22, 23, 27, 29, 31	51 132 02	Lead, violet, rectifier-regulator (15" - 14 gauge - uninsulated push on tab terminals) 18		
13	Rectifier-regulator 15, 16, 18, 22, 23, 29, 31	41 403 05			
14	Screw, H.C. 1/4-20 x 7/8 15, 16, 18, 22, 23, 29, 31	X-5-3	Lead, red, rectifier-regulator (3" - 12 gauge - uninsulated push on tab terminals) 27		
15	Connector, female (3 contact) 15, 16, 18, 22, 23, 29, 31	236602			
16	Rectifier-regulator 27	25 403 01			
17	Screw, H.C. sems 1/4-20 x 5/8 (2) 27	X-132-5			

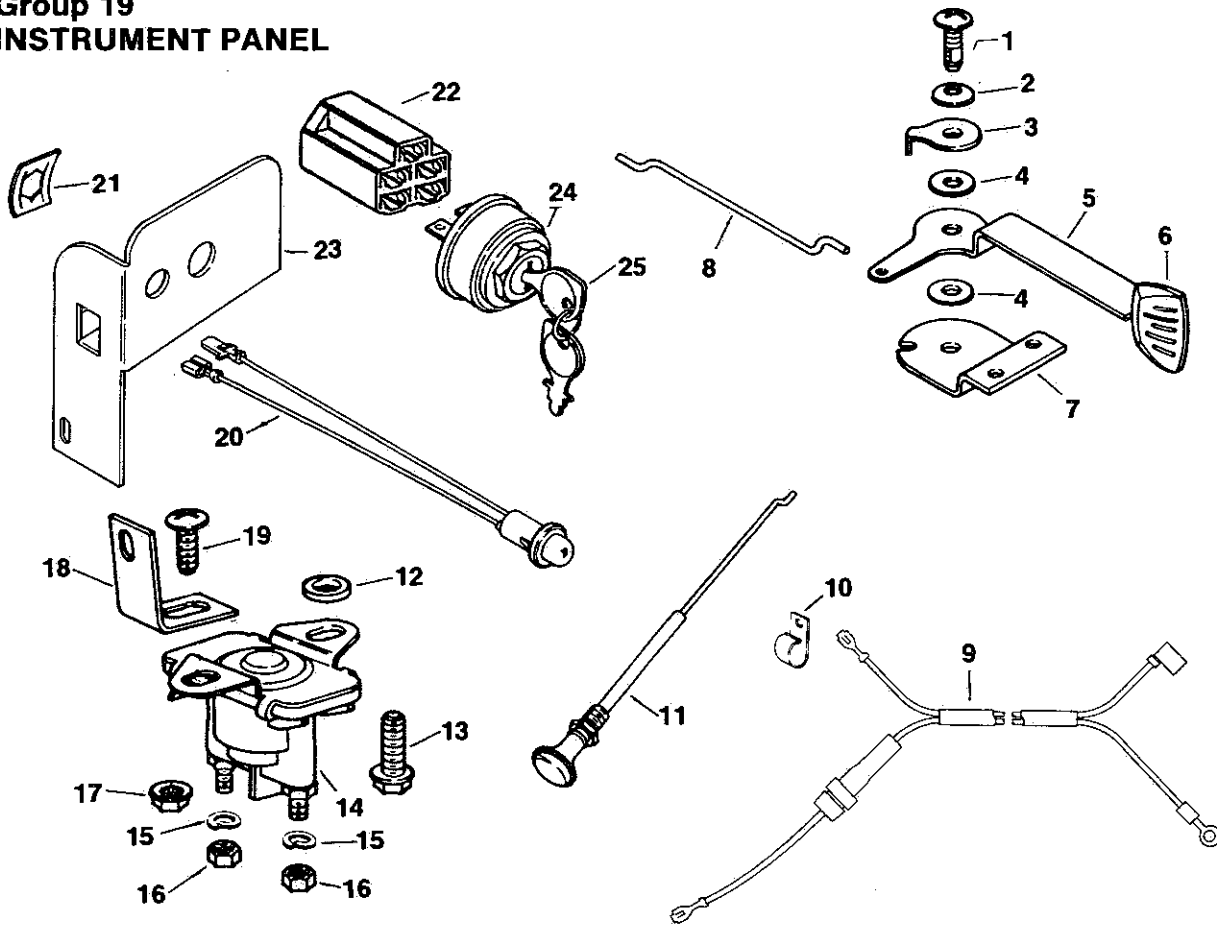
M18 & M20

IGNITION
(Cont'd)

Index Number	Description Variation Number	Part Number	Index Number	Description Variation Number	Part Number
	Lead, white, module to connector (27" - 14 gauge - insulated push on tab - uninsulated push on tab terminals) 16	52 518 07		Lead, white, w/diode, module to connector (13-1/4" - 14 gauge - insulated push on tab - uninsulated push on tab terminals) 23, 27, 29, 31	52 518 15
	Lead, white, module to connector (12" - 14 gauge - insulated push on tab - uninsulated push on tab terminals) 15, 22	52 518 09		Lead, white, w/diode (Service replacement lead for leads w/diode) (5" - 18 gauge - insulated push on tab - insulink) 23, 27, 29, 31	47 518 43

M18 & M20

Group 19 INSTRUMENT PANEL



Index Number	Description Variation Number	Part Number	Index Number	Description Variation Number	Part Number
1	Screw, pozidriv T.H. 1/4-20 x 5/8 6, 7	47 086 08	13	Screw, hex. wash. hd. 1/4-20 x 3/4 6, 7	X-67-62
2	Washer, spring 1/4 6, 7	52 468 11	14	Solenoid 6, 7	52 435 01
3	Tab, locking 6, 7	52 448 01	15	Washer, lock 1/4 (2) 6, 7	X-20-1
4	Washer, flat 1/4 (2) 6, 7	52 468 10	16	Nut, hex. 1/4-20 (2) 6, 7	X-81-1
5	Lever, throttle 6, 7	52 090 08	17	Pin nut 1/4-20 6, 7	X-799-1
6	Knob, throttle lever 6, 7	52 341 01	18	Bracket, solenoid 6, 7	52 126 06
7	Plate, throttle stop 6, 7	52 146 07	19	Bolt, R.H. sq. neck 1/4-20 x 9/16 6, 7	52 086 10
8	Linkage, throttle 6, 7	52 079 04	20	Light, indicator 400	25 352 01
9	Harness, wiring 6, 7	52 176 03	21	Nut, speed 400	25 100 03
10	Clip, cable 6, 7	234511	22	Connector, female (5 contact) 6, 7	48 155 01
11	Cable, choke 6, 7	52 225 01	23	Panel, instrument 6, 7	52 178 01
12	Washer, plain 1/4 6, 7	X-25-95			

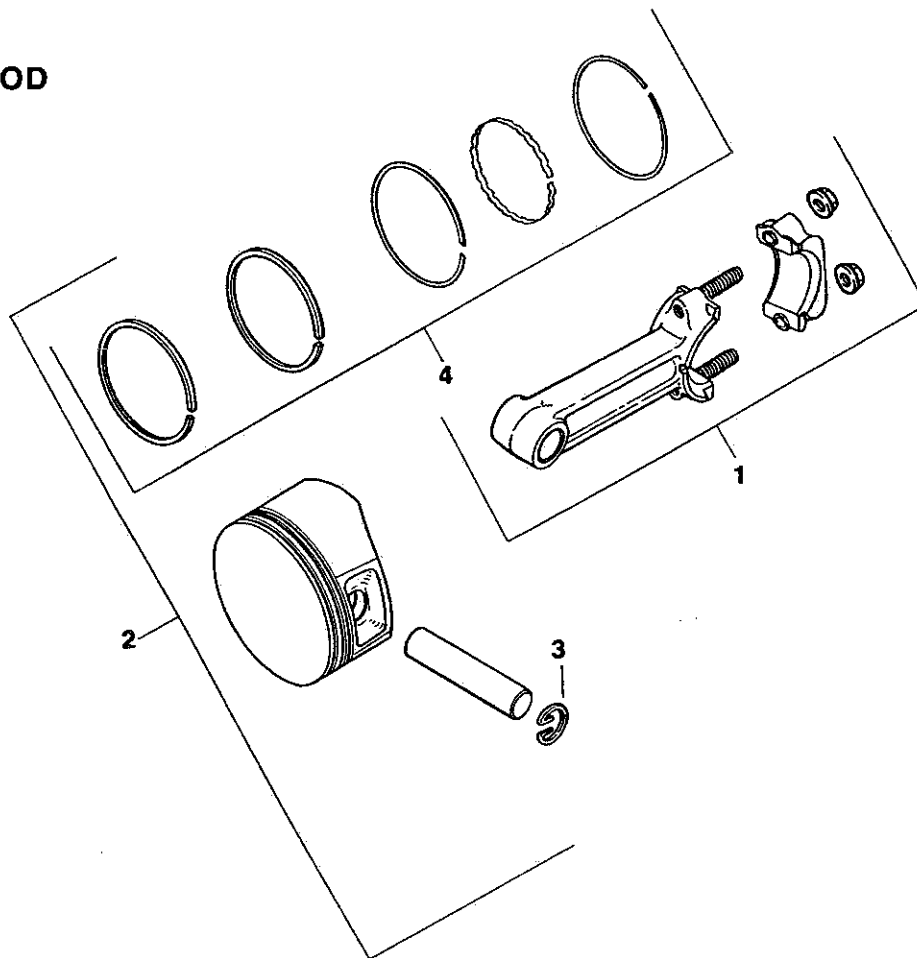
M18 & M20

INSTRUMENT PANEL
(Cont'd)

Index Number	Description Variation Number	Part Number	Index Number	Description Variation Number	Part Number
24	Switch, key assembly (Includes 25) 6, 7	25 099 04		Lead, black, solenoid to starter (8-1/2" - 6 gauge - insulated barrel eyelet terminals) 7	52 518 02
25	Key (set of 2) 6, 7	48 340 01		Lead, white, w/diode key to module (27" - 14 gauge - insulated push on tab and uninsulated push on tab terminals) 6, 7	52 518 12
	Not Illustrated			Lead, white, w/diode (Service replacement lead for leads w/diode) (5" - 18 gauge - insulated push on tab - insulink) 6, 7	47 518 43
	Lead, black, solenoid to starter (6" - 6 gauge - insulated barrel eyelet terminals) 6	52 518 03			

M18 & M20

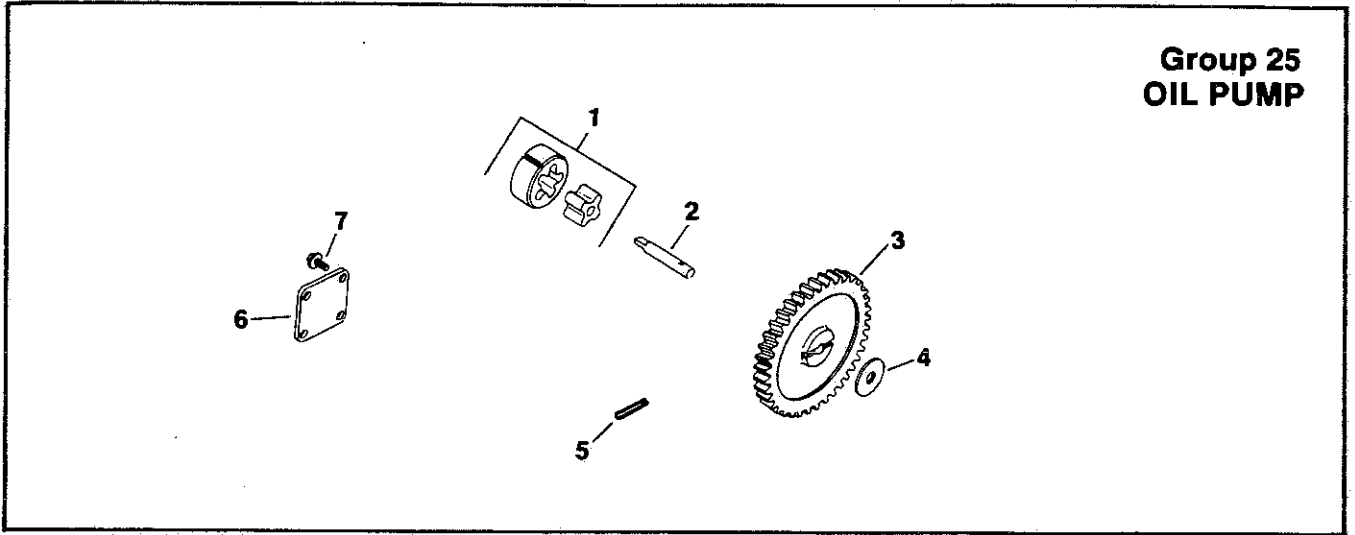
Group 22 PISTON & ROD



Index Number	Description Variation Number	Part Number	Index Number	Description Variation Number	Part Number
Model M18			Model M20		
1	Connecting Rod (Std.) (2)		1	Connecting Rod (Std.) (2)	
	14	52 067 67		15	52 067 71
	Connecting Rod (.010) (2)	52 067 68		Connecting Rod (.010) (2)	52 067 72
2	Piston w/Ring Set (Std.) (2)		2	Piston w/Ring Set (Std.) (2)	
	14	52 874 11		15	52 874 16
	Piston w/Ring Set (.003) (2)	52 874 12		Piston w/Ring Set (.003) (2)	52 874 17
	Piston w/Ring Set (.010) (2)	52 874 13		Piston w/Ring Set (.010) (2)	52 874 18
	Piston w/Ring Set (.020) (2)	52 874 14		Piston w/Ring Set (.020) (2)	52 874 19
	Piston w/Ring Set (.030) (2)	52 874 15		Piston w/Ring Set (.030) (2)	52 874 20
3	Retainer, piston pin (4)		3	Retainer, piston pin (4)	
	14	230004		15	52 141 01
4	Ring Set (Std. & .003) (2)		4	Ring Set (Std. & .003) (2)	
	14	52 108 09		15	52 108 09
	Ring Set (.010) (2)	52 108 10		Ring Set (.010) (2)	52 108 10
	Ring Set (.020) (2)	52 108 11		Ring Set (.010) (2)	52 108 11
	Ring Set (.030) (2)	52 108 12		Ring Set (.030) (2)	52 108 12

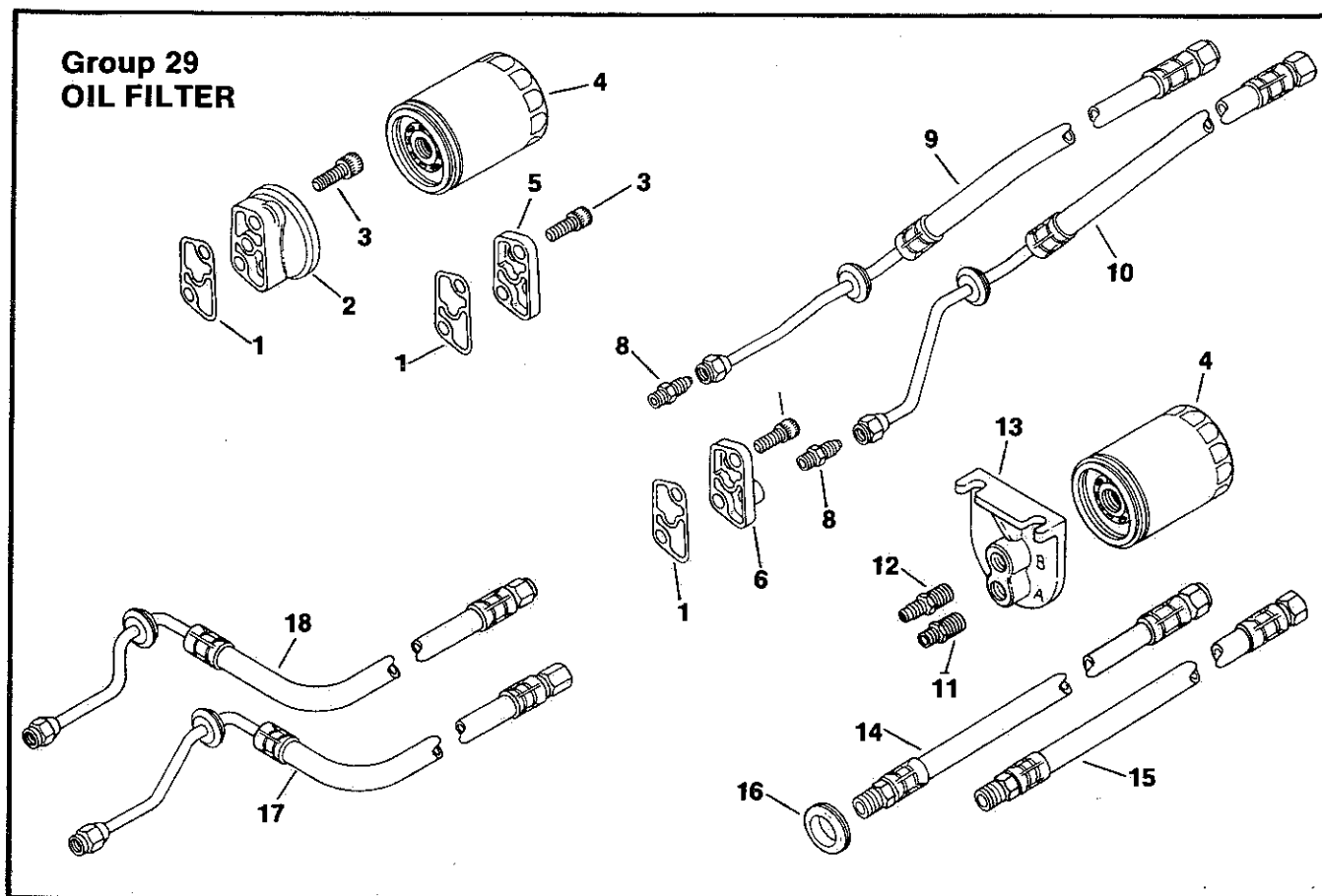
M18 & M20

Group 25 OIL PUMP

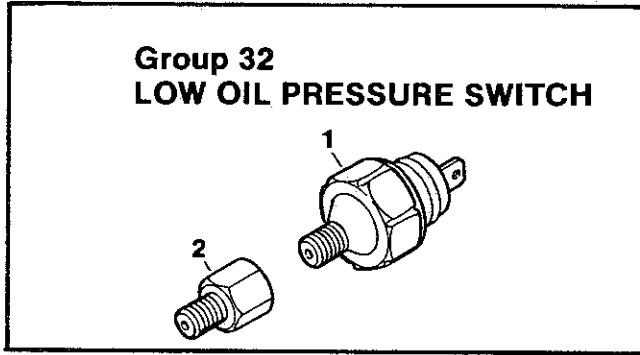


Index Number	Description Variation Number	Part Number	Index Number	Description Variation Number	Part Number
1	Rotor set 4	52 393 09	5	Pin, roll 4	X-280-25
2	Shaft, oil pump 4	52 144 05	6	Cover, oil pump 4	52 096 03
3	Gear, oil pump 4	52 043 05	7	Screw, hex. wash. hd. 10-32 x 3/8 (4) 4	X-67-64
4	Spacer (A.R. Max. 2) 4	52 422 01			

M18 & M20



Index Number	Description Variation Number	Part Number	Index Number	Description Variation Number	Part Number
1	Gasket, oil filter 2, 3, 4, 7, 8	52 041 16	11	Connector, reducing (1/2-20 SAE 45° male flare, 1/4-18 N.P.T.F. x 1-5/16" long) 3, 7, 8	52 155 03
2	Adapter, oil filter 2	52 181 02	12	Nipple, hexagon (1/4-18 N.P.T.F. x 1" long) 3, 7, 8	52 136 02
3	Screw, hex. socket hd. cap 5/16-18 x 1-1/4 (2) 2, 4	X-55-15	13	Adapter, remote oil filter 3, 7, 8	25 029 01
4	Oil filter 2, 3, 7, 8	52 050 02	14	Oil hose (white tracer) (1/8-27 N.P.T.F. male coupling, 1/2-20 SAE 45° flare female coupling x 23" long) 3	52 326 09
5	Kit, filter cover (Includes 1 & 3) 4	52 755 66	15	Oil hose (red tracer) (1/8-27 N.P.T.F. male coupling, 1/4-18 NPSM female coupling x 23" long) 3	52 326 11
6	Cover, remote filter 3, 7, 8	52 096 28	16	Grommet (2) 3	52 313 03
7	Screw, hex. socket hd. cap 5/16-18 x 3/4 (2) 3, 7, 8	X-55-6	17	Oil line (red tracer) (1/4-18 NPSM female swivel coupling, 1/2-20 female 45° flared nut x 13-3/4" long) 8	52 353 10
8	Connector, reducing (1/2-20 SAE 45° male flare, 1/8-27 N.P.T.F. x 1-1/8" long) (2) 7, 8	52 155 07	18	Oil line (white tracer) (1/2-20 SAE 45° flare female swivel coupling, 1/2-20 female 45° female nut x 13-3/4" long) 8	52 353 11
9	Oil line (white tracer) (1/2-20 SAE 45° flare female coupling, 1/2-20 female 45° flared nut x 19" long) 7	52 353 07			
10	Oil line (red tracer) (1/4-18 NPSM female coupling, 1/2-20 female 45° flared nut x 20-1/2" long) 7	52 353 06			



Index Number	Description Variation Number	Part Number
1	Switch, low oil pressure 5, 6, 8	52 099 06
2	Reducer 5, 6, 8	52 158 05
Not Illustrated		
	Lead, green, pressure switch (21" - 18 gauge - insulated push on tab and uninsulated push on tab terminals) 6	52 518 08
	Lead, green, pressure switch (16" - 18 gauge - insulated push on tab and uninsulated push on tab terminals) 8	52 518 13

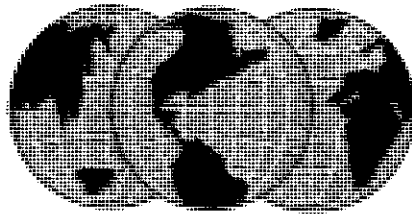
M18 & M20

Index Number	Description Variation Number	Part Number
	Gasket Set	
	53	52 755 53
	<i>Set Includes</i>	
	Seal, front oil	52 032 10
	Seal, rear oil 1-3/8" I.D.	X-583-5
	Seal, rear oil 1-1/2" I.D.	52 032 08
	Gasket, elbow	277069
	Gasket, air cleaner	52 055 04
	Gasket, fuel pump	52 041 17
	Gasket, intake (2)	52 041 09
	Gasket, exhaust (2)	52 041 10
	Gasket, closure plate	52 041 15
	Gasket, carburetor	271030
	Seal, valve stem (2)	52 032 13
	Gasket, cylinder head (2)	52 041 18
	Gasket, valve cover (3)	52 055 01
	Gasket, oil filter	52 041 16
	Seal, breather	52 032 04

DECALS

Description	Location	Part Number
Air Cleaner Instructions (White/Clear)	Air Cleaner Cover	25 113 01
Drive Pulley Warning (White/Black)	Rope Start Pulley	25 113 06
Air Cleaner Position Instruction (Black/White)	Air Cleaner Cover	52 113 16
Off-Run-Start Ignition (White/Clear)	Instrument Panel	52 113 17
Slow-Fast Speed Control (White/Clear)	Air Cleaner Base (front)	52 113 18
Magnum Kohler 18 (White/Clear)	Blower Housing	52 113 25
Magnum Kohler 20 (White/Clear)	Blower Housing	52 113 27

THE NEW SHAPE OF KOHLER POWER



KOHLERengines

ENGINE DIVISION, KOHLER CO., KOHLER, WISCONSIN 53044

FORM NO : TP-2233-B
ISSUED: 6/86
REVISED: 6/87
MAILED:

LITHO IN U.S.A.

6x6World.com