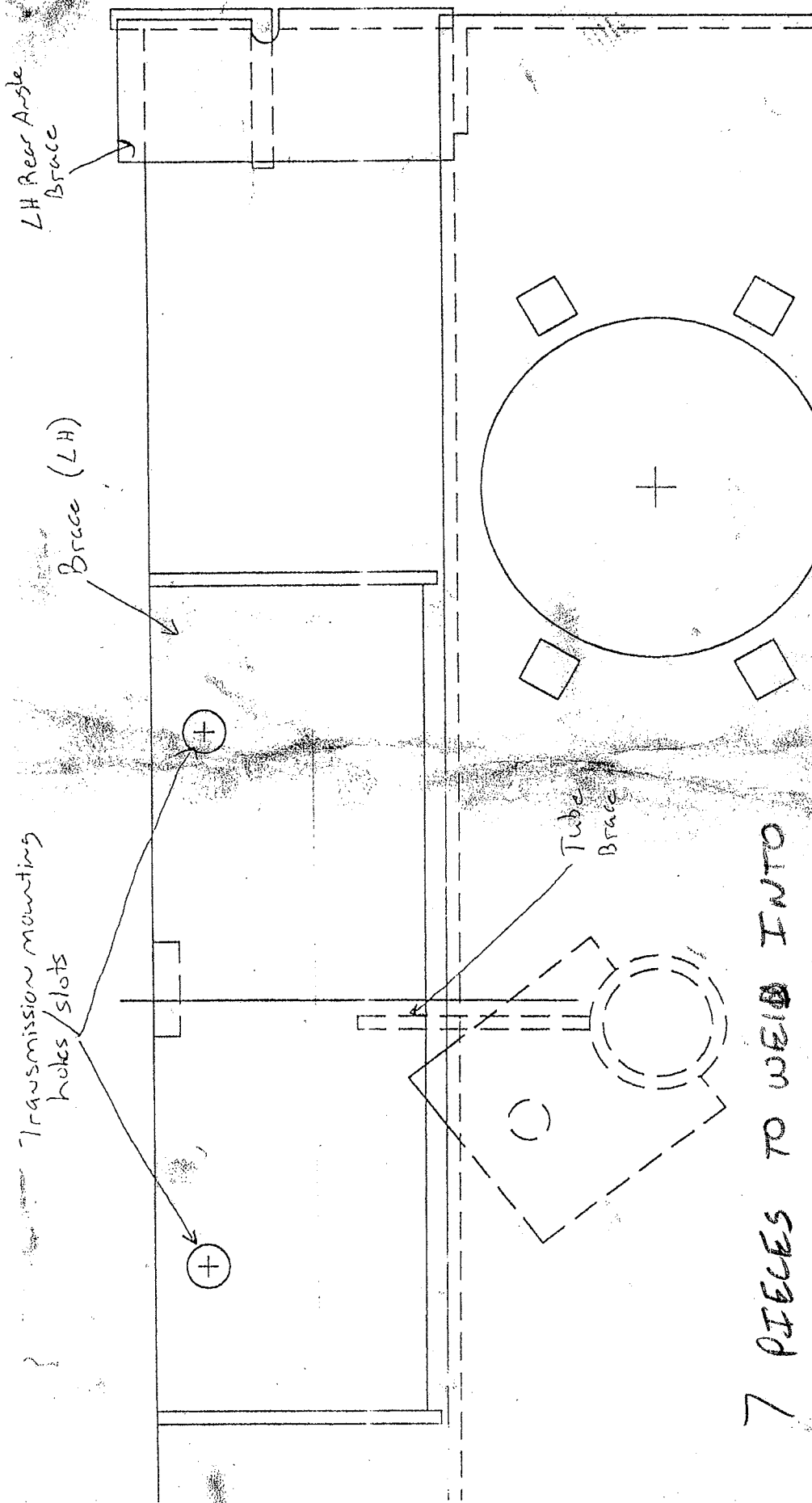


IV Frame Kit Info



SIDE VIEW L.H.

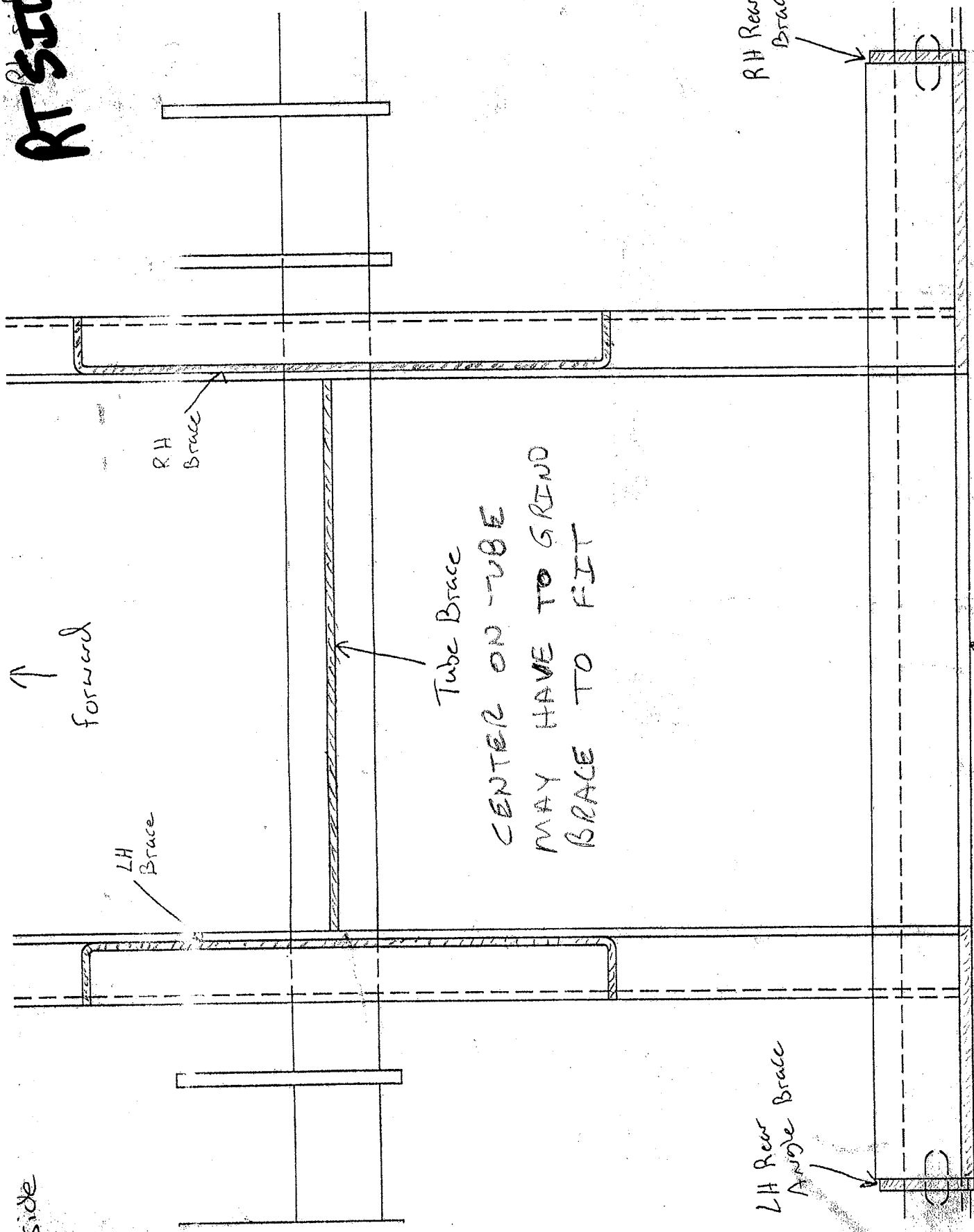
7 PIECES TO WEILD INTO
FRAMES WITH SLOTTED
MOUNT HOLES

FORWARD

~~FRONT VIEW~~
~~FRONT VIEW~~

RT SIDE

Lf side



TUBE BRACE
CENTER ON TUBE
MAY HAVE TO GRIND
BRACE TO FIT

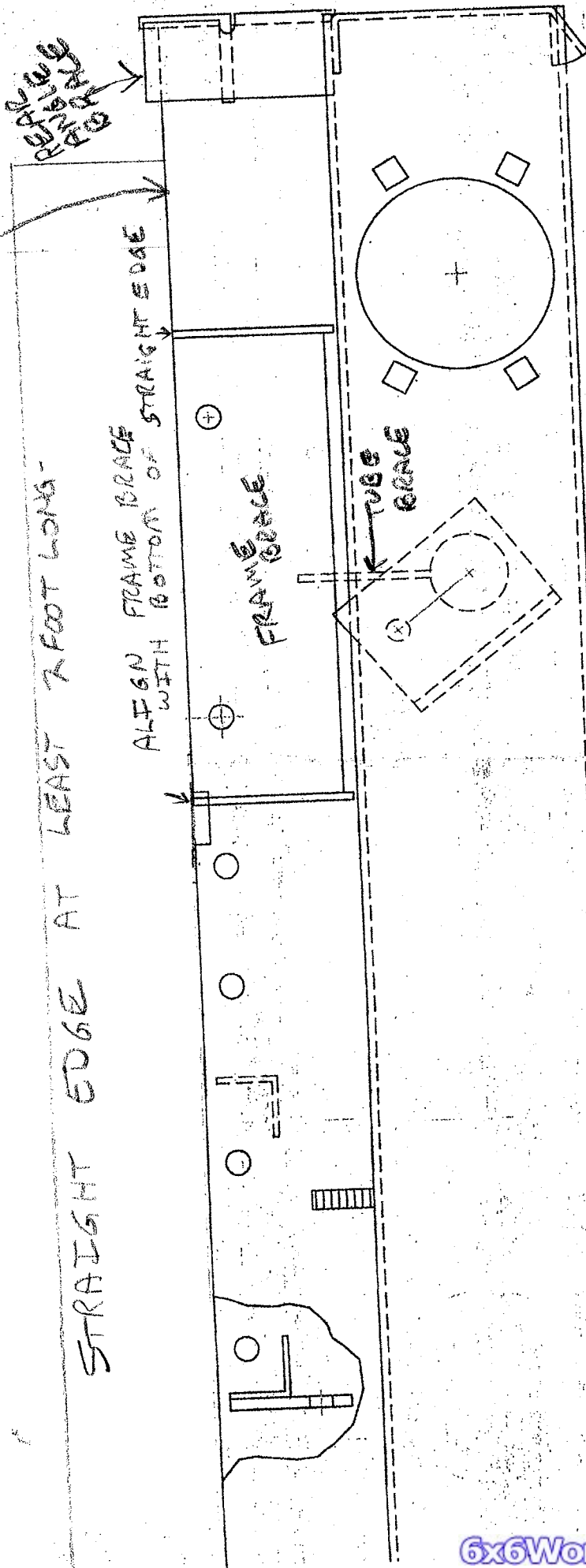
TOP VIEW

3

FRAME VIEW LEFT SIDE

FRAME MAY BE BEAT DOWN
HERE. HOLD FRAME BRACE
TO BOTTOM OF STRAIGHT EDGE
TO GET T-20 AT PROPER HEIGHT

STRAIGHT EDGE AT LEAST 7 FOOT LONG -



4

HdD BRACKETS TO TAKE WELD WITH TOP BOLT

INSTALL THESE LAST WITH T-20 LOWER BOLTS INSTALLED

Mounting Bracket

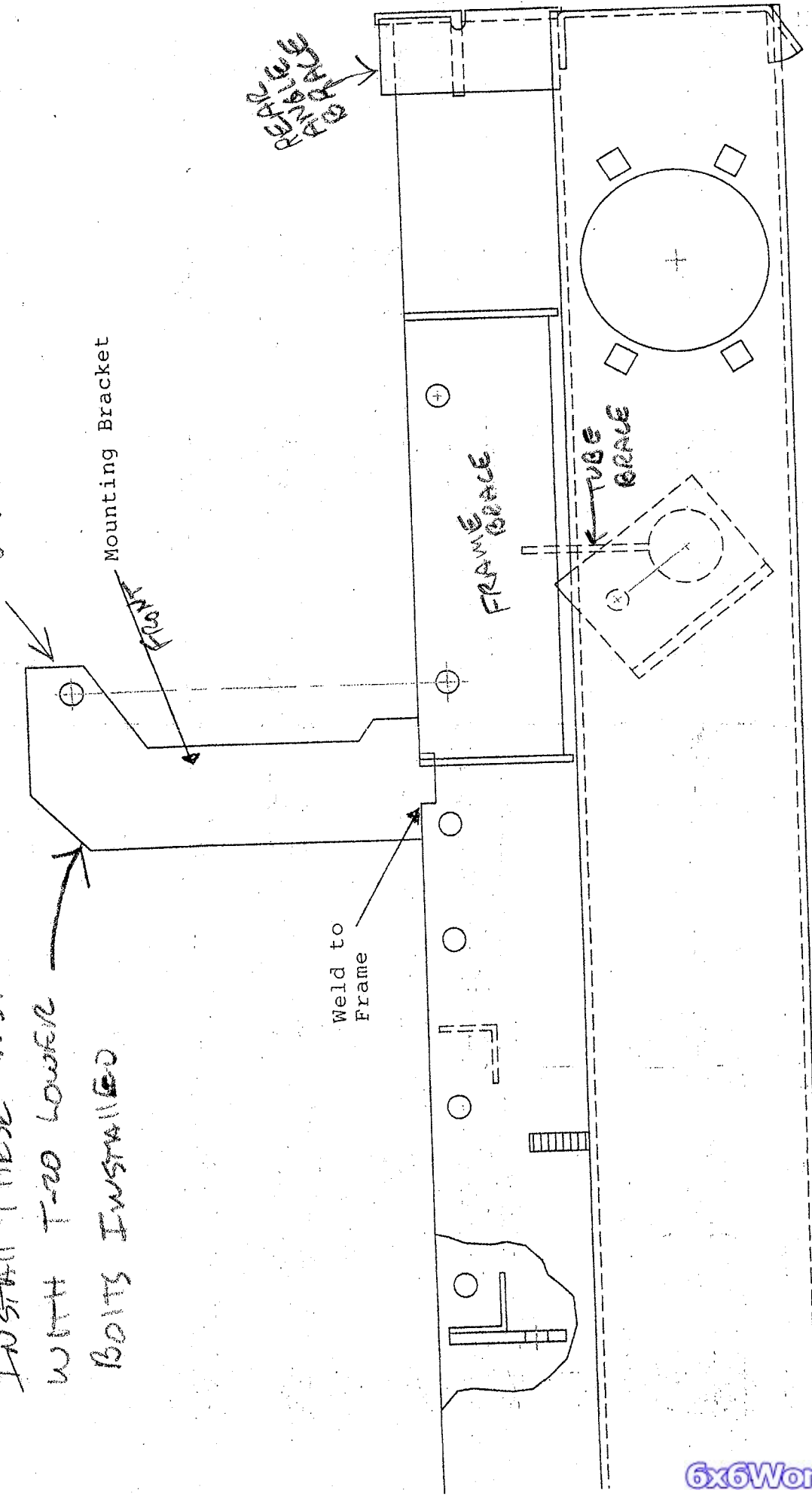
FRONT

Weld to Frame

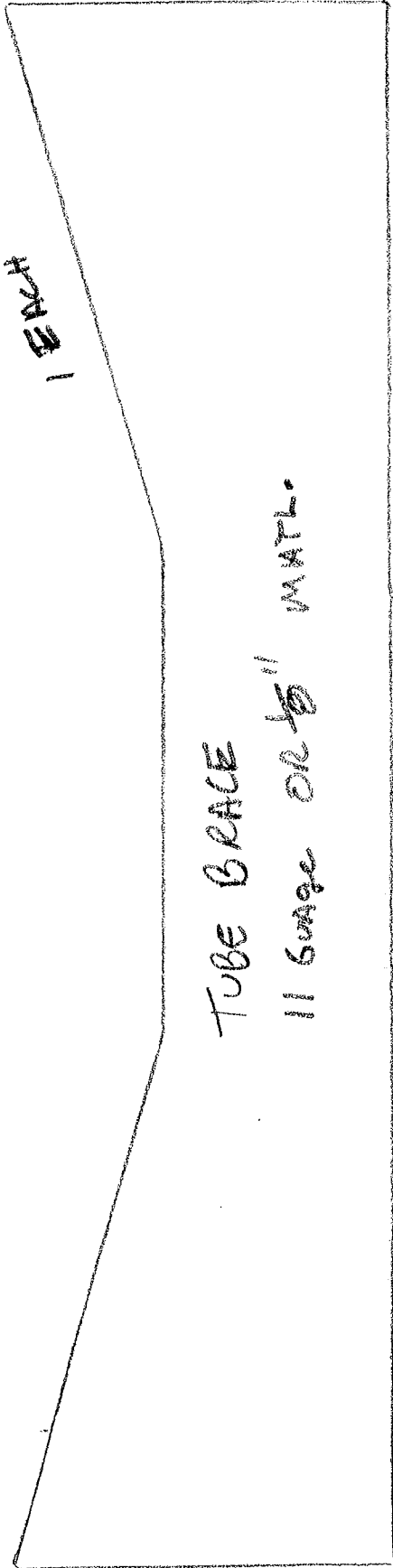
FRAME BRACE

TUBE BRACE

REMOVE BRACKET FROM HERE



1 EACH

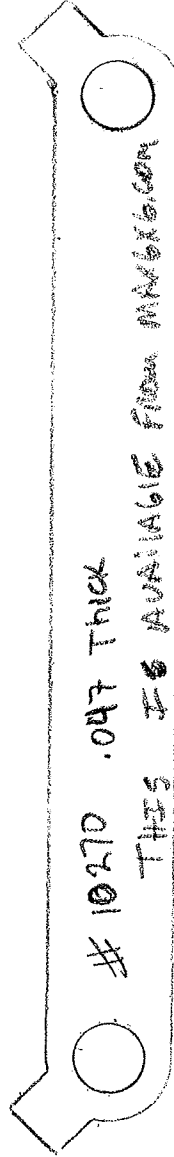


TUBE BRACE

11 Gauge or $\frac{1}{8}$ " MATL.

USUALLY HAVE TO GROUND ENDS TO FIT IN OLDER FRAMES.

2 EACH
NEEDED

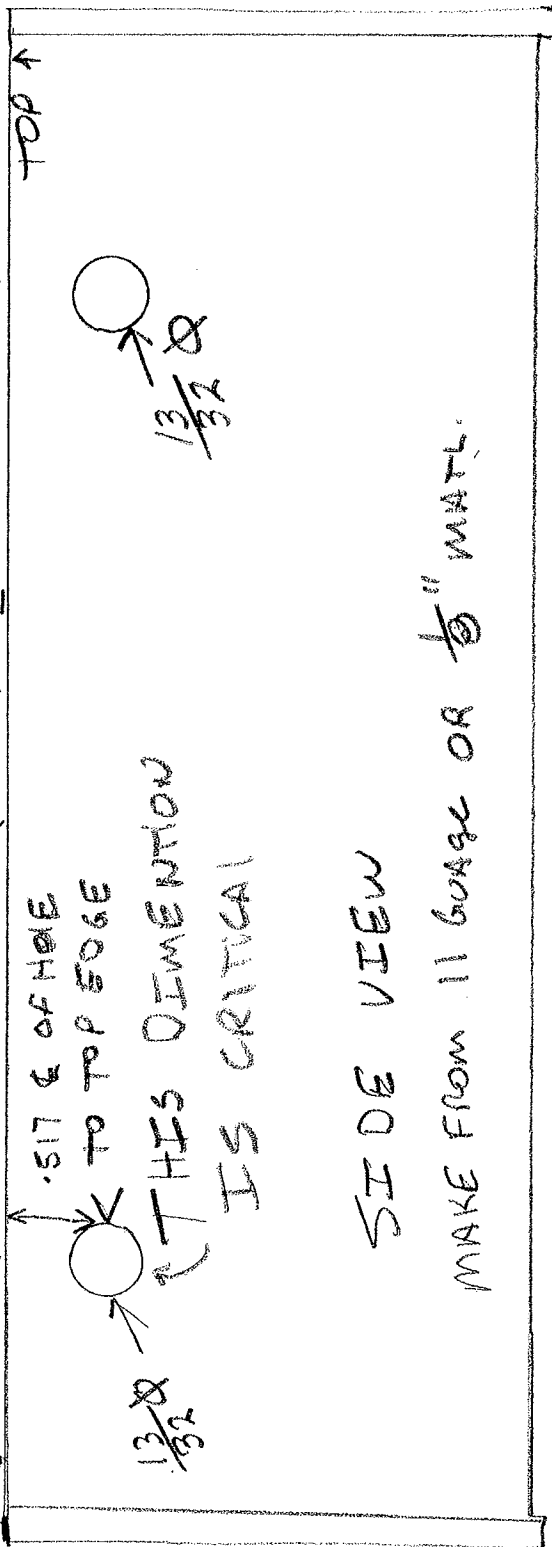


10-270 .047 THICK

THIS IS AVAILABLE FROM MMBX6.COM

ALIGN STRAIGHT EDGE
HERE

← 5.054 (5 1/16") ← ON HOLES →

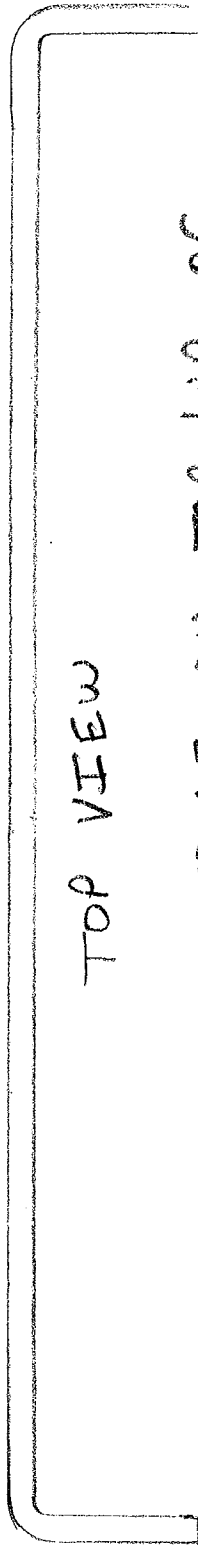


SIDE VIEW

MAKE FROM 11 GAUGE OR 1/8" MATL.

REACH NEEDED

FRAME BRACE

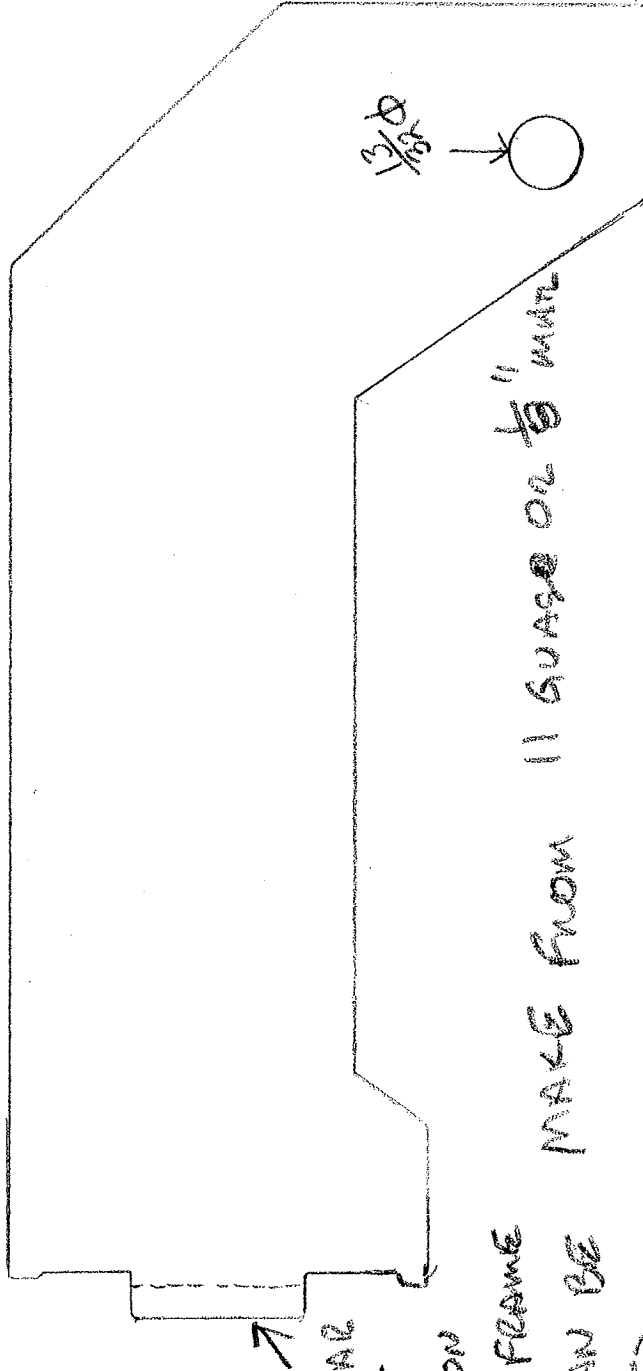


TOP VIEW

LAY A STRAIGHT EDGE ON TOP LIP OF
FRAME AT LEAST 2 FEET FORWARD OF
TRANSMISSION MOUNT AND ALIGN TOP WITH
STRAIGHT EDGE.

7

FRONT BRACE 2 NEEDED



↑

THIS EAR
ISNT
USED ON
OLDER FRAME
AND CAN BE
REMOVED

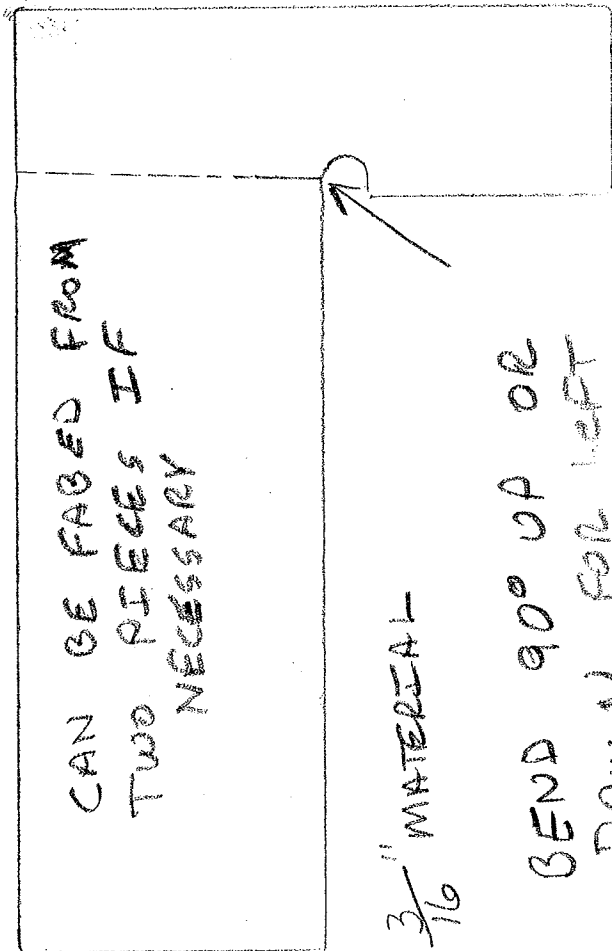
MAKE FROM 11 GAUGE OR 1/8" MIN.

1 3/8" Ø

IF WELD THESE IN LAST WITH T-20 IN
PLACE AND BOLTS HOLDING BRACES IN PLACE.
AFTER INSTALLING BEND THE DIAMOND
SHAFTER RETAINERS SO THEY LAY
FLAT AGAINST TRANSMISSION CASE.
FRONT WONT GO INTO FORWARD PROPERLY IF NOT
BENT.

8)

1 EACH LEFT 1 EACH RIGHT



CAN BE FABED FROM
TWO PIECES IF
NECESSARY

$\frac{3}{16}$ " MATERIAL

BEND 90° UP OR
DOWN FOR LEFT
AND RIGHT SIDE

THESE WELD IN BY THE ADJUSTING BOLTS AND
MAKE THE REAR ANGLE SOLID. USUALLY HAVE TO
BEND THE ANGLE AND GRIND THESE TO FIT.

