

Max IV Wire Connections

Maxiv command wire

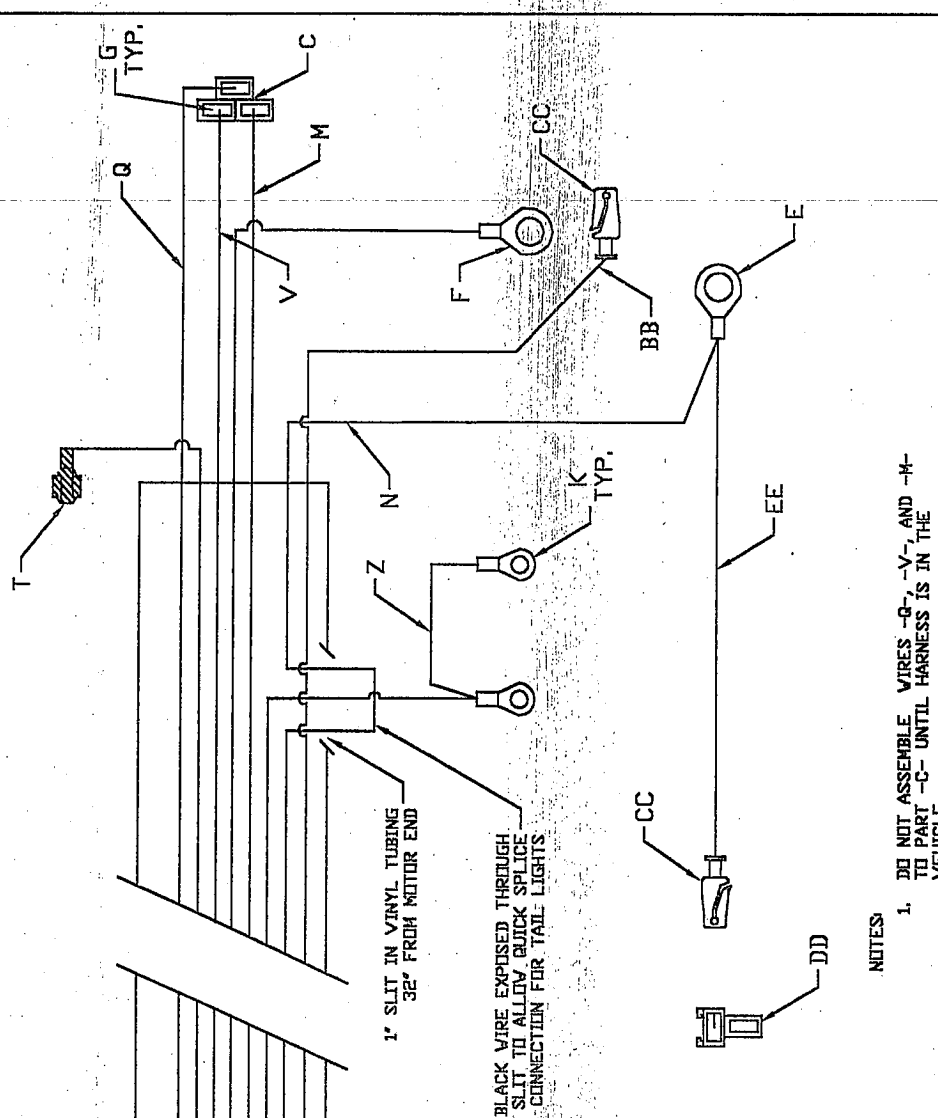
Harness Part Number 011011 Harness Used in Production as of Serial Number 11998 Kohler Command 20, 23, 25HP

NOTE: SEE DRAWING NUMBER 011011 FOR WIRE LABELS

| <u>WIRE LABEL</u> | <u>CONNECTION ON VEHICLE</u> |
|-------------------|---|
| A | TO INDAK SWITCH 3B464 - Use yellow wire terminal for power accessory (+) when switch is in any on position. |
| AA | HEATED THROTTLE CABLE WIRE - Can be used for an accessory wire if no heated throttle cable. |
| B | TO HEADLIGHTS RED (+), BLACK (-) |
| C | TO KOHLER COMMAND ENGINE Q (TO PURPLE ON ENGINE) V (TO BOTH REDS ON ENGINE) M (TO WHITE ON ENGINE) |
| D | TO AMMETER (-) |
| E | CHASSIS GROUND |
| EE | HEATED THROTTLE CABLE GROUND - OPTIONAL |
| I | TO AMMETER (+) ON SWITCH END OF HARNESS TO STARTER (+) ON ENGINE END OF HARNESS |
| J | TO TAIL LIGHTS (+) |
| N | SPLICE TO TAIL LIGHTS (-), GROUND TO CHASSIS |
| O | TO INDAK SWITCH BASE - GROUND |
| P | TO HOUR METER (-) - OPTIONAL |
| R | 30 AMP ATC FUSE AND HOUSING |
| S | INDAK SWITCH JUMPER |
| U | TO STARTER SOLENOID - Power in start position |
| W | TO HOUR METER (+) - OPTIONAL |

Note: Due to the labeled drawing being an assembly drawing, all the letters in drawing number 011011 are not listed in the above connections section.

| REV | DESCRIPTION | ECN | BY | DATE | APP |
|-----|--------------------|-------|----|----------|-----|
| D | ADD TOLERANCE NOTE | R0315 | MP | 8/4/97 | MP |
| E | ADD T-CABLE WIRES | R0316 | MP | 10-14-97 | MP |



1' SLIT IN VINYL TUBING
32" FROM MOTOR END

BLACK WIRE EXPOSED THROUGH
SLIT TO ALLOW QUICK SPLICE
CONNECTION FOR TAIL LIGHTS

NOTES UNLESS OTHERWISE SPECIFIED

RECREATIVES INC

TOLERANCES: UNLESS OTHERWISE SPECIFIED
FRACTIONS: 1/32 ANGLES: 1° Holes: .005
DIMENSIONS: .0004 ± .03 .0008 ± .010

SCALE: FULL DIMENSION: 7/11/05
REF 1 RECD: APP: EXP NO: MATERIAL:

PARTNAME: WIRING HARNESS
MAX M KOHLER COMMAND

SIZE PART NUMBER: C 011011
REV: 1 of 1

- NOTES:
- DO NOT ASSEMBLE WIRES -Q-, -V-, AND -M- TO PART -C- UNTIL HARNESS IS IN THE VEHICLE
 - DO NOT ASSEMBLE WIRES EE AND BB TO PART DD UNTIL HARNESS IS IN THE VEHICLE.
 - INCLUDE ONE - 2 PIN HOUSING (DD) FOR WIRES EE AND BB AND ONE - 3 PIN HOUSING (CC) FOR WIRES Q, V, AND M WITH EACH HARNESS.
 - OMIT WIRE -W- AND -P- FOR VEHICLES NOT EQUIPPED WITH HOUR METER.
 - ALL TERMINALS ARE 16 Ga. UNLESS OTHERWISE SPECIFIED.
 - ALL DIMENSIONS ARE WIRE CUT LENGTHS.
 - DIMENSION TOLERANCES ARE +1.00"

| LETTER | MATL. NO. | DESCRIPTION | QTY. | VENDOR P/N |
|--------|-----------|------------------------|------|------------|
| EE | 01002A | 16GA. X 6" BLACK | 1 | |
| DD | | FEMALE HOUSING | 1 | |
| CC | 20056 | MALE LOCK TERMINAL | 2 | |
| BB | 01004A | 16GA. X 137" RED | 1 | |
| AA | | 3/16" INSUL. FEM SPADE | 1 | |
| Z | 01004A | 16G X 46" RED | 1 | 11168 |
| V | 01001A | 16G X 10.5" RED | 1 | 11168 |
| U | 01003A | 16G X 129" YELLOW | 1 | 11168 |
| T | 20105 | 16G X 134" GREEN | 1 | 11168 |
| S | 01005A | INSULATED SPADE | 1 | 894005 |
| R | 011030 | 16G X 3" WHITE | 1 | 11168 |
| Q | 011030 | 30 AMP FUSE ASSY. | 1 | FHW-14-24 |
| P | 01005A | 16G X 137" WHITE | 1 | 11168 |
| O | 01002A | 16G X 10.5" BLACK | 1 | 11168 |
| N | 01002A | 16G X 5" BLACK | 1 | 11168 |
| M | 01002A | 16G X 126" BLACK | 1 | 11168 |
| L | 01004A | 16G X 129" BLACK | 1 | 11168 |
| K | 01004A | 16G X 5" RED | 1 | 11168 |
| J | 20025 | #10 O RING TER. | 3 | 252105 |
| I | 01004A | 16G X 90" RED | 1 | 11168 |
| H | 01004A | 16G X 140" RED | 1 | 11168 |
| G | 01017C | 7/16 X 116" VNL | 1 | 1756 |
| F | 20053 | FEMALE LOCK SPADE | 14 | 925735 |
| E | 20014A | 5/16 O RING TER | 1 | 252565 |
| D | 20015 | 1/4" O RING TER. | 1 | 252145 |
| C | 010135 | #10 O RING TER, 14ga | 1 | 253105 |
| B | 20097 | 3-PIN FEM CON | 1 | 243785 |
| A | 20087A | 2-PIN FEM CON | 1 | 937815 |
| | 20039A | 6-PIN FEM CON | 1 | 2977233 |